



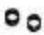


John Deere
4210, 4310, 4410 Soft Cab
Parts List & Mounting Instructions

Jodale • Perry

Printed: 2004/08

John Deere 4210, 4310, 4410 Mounting Instructions

Standard Parts List

Qty	Description	Photo
L&R	Rear Brackets	
L&R	Front Brackets	
4	Front Bracket Spacers (no-loader)	
2	Right Front Hydraulic Tube Spacers	
L&R	Front Enclosure Shields	
2	Cab Lift Brackets (1" Tube)	
2	3/8" Black Snap Caps	
16.5 LF	180° O-rubber	
3.5 LF	90° O-rubber	
L&R	Front Pedal Floormat	

NOTE: All references to left and right are taken from the operator's point of view when he/she is sitting in the driver's seat.

John Deere 4210, 4310, 4410 Mounting Instructions

Electrical Connectors List

Qty	Description
2	Connectors, Loop, 10GA, ¼”
1	Connectors, Loop, 10GA, ½”
1	Connectors, Loop, 10GA, 3/8”
1	Splicer, Wire, Blue

NOTE: All references to left and right are taken from the operator's point of view when he/she is sitting in the driver's seat.

John Deere 4210, 4310, 4410 Mounting Instructions

Standard Bolts List

Qty	Description
2	Nut, Hex, M10x1.5, Gr. 10.9, Yellow Dichrome
6	Bolt, Hex, M16x2.0x60, Gr. 10.9, Yellow Dichrome
2	Bolt, Hex, M16x2.0x40, Gr. 10.9, Yellow Dichrome
8	Washer, Lock, 5/8"
4	Washer, Flat, Steel, 9/16" x 2 1/2", Yellow Dichrome
4	Washer, Flat, Rubber, 9/16" x 2 1/2"
4	Nut, Hex, Nylon Locking, 1/2", Gr. 8, Yellow Dichrome
4	Bolt, Hex, 1/2" x 3", Gr. 8, Yellow Dichrome
4	Isolator, Rubber, 1/2" x 2 1/2"
6	Nut, Flange, 1/4", Macro-black
6	Bolt, Flange, 1/4" x 3/4", Macro-black

NOTE: All references to left and right are taken from the operator's point of view when he/she is sitting in the driver's seat.

John Deere 4210, 4310, 4410 Mounting Instructions

Optional Parts Lists

Heater Option (if equipped)

Qty	Description	Photo
2	Fitting, 3/8NPT x 3/8" Barb Straight	
1	Splicer, Rad-Hose, 1 1/8" (4200)	
2	Clamp, Hose, HS-6	
2	Clamp, Hose, HS-20	

NOTE: All references to left and right are taken from the operator's point of view when he/she is sitting in the driver's seat.

John Deere 4210, 4310, 4410 Mounting Instructions

NOTE: Use the following torque specifications for all hardware: ½" hardware 73 ft-lbs, 3/8" hardware 42 ft-lbs, 5/8" hardware 177 ft-lbs.

1. Prior to cab installation, if tractor is equipped with front-end loader remove quick-attach loader. Take the factory 2-post ROPS and remove, save factory hardware to be used later (remove rear wheels).
2. Take the left rear bracket and place it onto the rear axle where the 2-post was located. Re-use the factory hardware and loosely bolt the bracket into place. Take the provided M10x1.5 hex nut and re-attach the bottom of the fender to the mount tab provided on the rear bracket. Re-attach the seat platform with the factory hardware with the second mount tab. Re-attach the top of the fender with the factory hardware through the hole in the rear bracket. See Figures 1 & 2. Repeat for the right side. Torque up rear bolts and fender bolts and re-install rear wheels.



Figure 1



Figure 2

3. If the tractor is NOT equipped with a front-end loader, then use the front bracket spacers provided, otherwise continue with front bracket installation. It will be necessary to remove the top two loader bracket bolts, and the bottom front bolt in order to attach the front bracket. Position the left front bracket onto the loader bracket (or mount spacers) and using the M16x2.0x60 hex bolts and 5/8" lock washers, loosely bolt the bracket into place as shown in Figure 3.
4. Take the right hydraulic mount spacer tubes and remove the hydraulics mount plate. Put the spacers behind the mount plate and loosely attach with the M10x? Hex bolts provided. Take the right front bracket and position over the loader mount plate (or mount spacers) and loosely bolt into place with the same hardware used on the left side. Torque the hydraulic mount plate back up and torque the front brackets to the bolt specifications provided. See Figure 4.

NOTE: All references to left and right are taken from the operator's point of view when he/she is sitting in the driver's seat.

John Deere 4210, 4310, 4410 Mounting Instructions

Figure 3



Figure 4



5. Move to the cab. Remove the left door, right escape window, and lower right window before proceeding. Take the provided cab lift brackets and attach to the upper A-C crossmember near the B-post through the holes provided. Using a lift strap or chain, prepare to lift the cab off of the shipping pallet by unbolting the cab from the shipping brackets. Lift the cab slightly in order to provide better access for the O-rubber installation.

6. Use Figures 5-9 for reference and begin to install the O-rubber. Take the 90d O-rubber and move to the left, lower front part of the cab. Install with the bulb facing down along the sheetmetal edge as shown in Figure 5. Repeat for the right side, use Figure 6 as a guide.

Figure 5

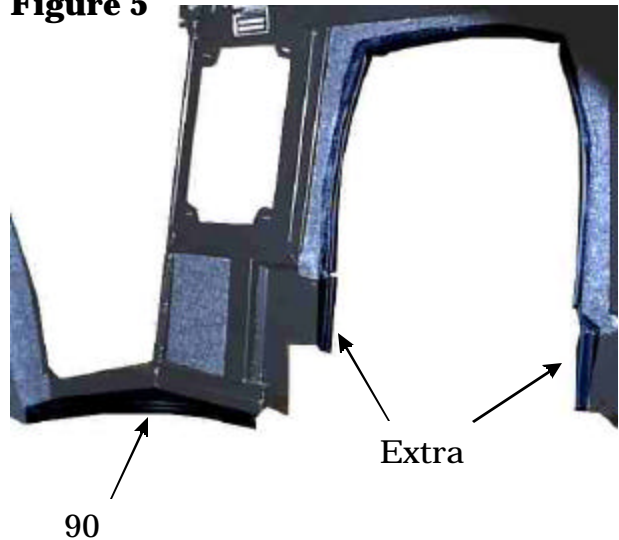
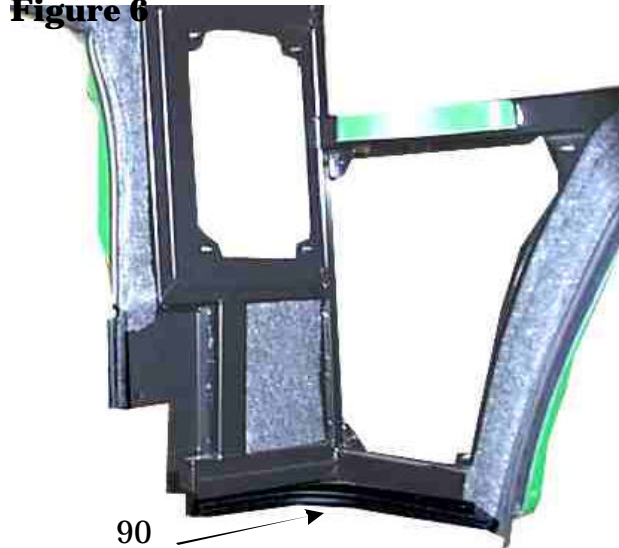


Figure 6



7. Take the 180d O-rubber and move to the hood shield. Beginning at the bottom of the steel panel, install the O-rubber around the hood shield opening. Use Figures 5 & 6 for reference. NOTE: add

NOTE: All references to left and right are taken from the operator's point of view when he/she is sitting in the driver's seat.

John Deere 4210, 4310, 4410 Mounting Instructions

two short pieces onto the sheetmetal edge below the end of the hood shield for mounting purposes ONLY. This will prevent the hood from being scratched, and will be removed before front shields are installed.

Figure 7



there is 7/8" space between the steel mounting plates. Torque all fasteners now.

Figure 8



8. Take the 180d O-rubber, and beginning at the bottom of the left side panel where the 90d O-rubber ended, install the O-rubber all the way around to the back of the cab and around the right side until you reach the same point on the right side. Use Figures 7-9 to guide you.

Figure 9



9. NOW YOU ARE READY TO MOUNT THE CAB. Place one isolator onto each bracket mounting plate. Lift the cab over the tractor and slowly lower over the tractor until the cab mounts are on the rubber isolators. Use the 1/2" x 3" hex bolts, 9/16" x 2 1/2" steel flat washers, 9/16" x 2 1/2" rubber flat washers, and 1/2" nylon locking hex nuts for each mount. Once all bolts have been started, you can torque all mounting bolts to the specifications provided. For the rubber isolators, torque the bolts down until

10. Take the short O-rubber pieces off of the under hood shield front shields. Take the left front shield enclosure and place it against the mounting hole patterns in the cab. Ensure that it does not interfere with any controls on the tractor and bolt into place with the 1/4" x 3/4" bolts and nuts provided. See Figure

NOTE: All references to left and right are taken from the operator's point of view when he/she is sitting in the driver's seat.

John Deere 4210, 4310, 4410 Mounting Instructions

10 for the left side. Repeat for the right side and use Figure 11.

Figure 10



Figure 11



11. Take the left floormat piece that will fit against the bell housing and place it against the left front enclosure shield. Ensure that it fits against the tractor well and glue into place. See Figure 12. Repeat for the right side, and use Figure 13.

Figure 12



Figure 13



12. Proceed with electrical harness hook-up, locate wires at bottom of A-post. Connect the heavy red wire to 12V. Connect the heavy black wire to tractor ground. Connect the orange wire to a switched source on the tractor.

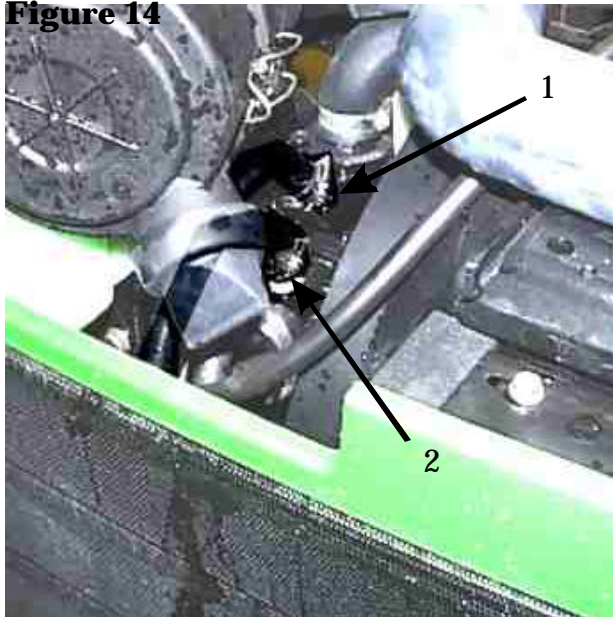
If the cab has the heater option, please proceed with steps 13-16.

NOTE: All references to left and right are taken from the operator's point of view when he/she is sitting in the driver's seat.

John Deere 4210, 4310, 4410 Mounting Instructions

13. Drain anti-freeze from engine before proceeding. It may be necessary to remove tractor hood side panels as well as air breather in order to provide better access for heater installation. Locate the water pump. Remove the two plugs on the water pump (4200 Deere will have one plug only, and it will be necessary to use the rad hose splicer provided and splice into the lower radiator hose for the coolant return. Use the splicer and hose clamps provided and one of the 3/8NPTx 3/8" barb straight fittings for the suction fitting. Remember to use a water sealant material around the threads of the fitting.) Screw both 3/8NPT x 3/8" barb straight fittings into the two plugs. The top fitting shown is the pressure fitting (1) and the other fitting will be

Figure 14



suction (2). Remember to use a water sealant material around the threads of the fitting. See Figure 14.

14. Run the heater hose to the fittings, ensuring that there is adequate hose length and so that it does not interfere with other parts in the engine. Cut the

hose and connect the hose labelled pressure to the pressure fitting with a HS-6 hose clamp provided. Connect the other hose to the suction fitting with the other HS-6 hose clamp provided.

15. Ensure that all connections are tight and then re-fill engine anti-freeze. Open the water valve on the switchplate and turn the fan on. Start the tractor and run at PTO RPM for atleast five minutes while the engine coolant builds up heat.

16. Check for leaks and continue to add antifreeze as required. NOTE: It is VERY important to purge the system of all air for the heater to operate at maximum efficiency. TIP: open the radiator cap while the engine is running to help purge air bubbles. Continue running the engine until the heater generates HOT air.

NOTE: All references to left and right are taken from the operator's point of view when he/she is sitting in the driver's seat.