

**John Deere**

**1420, 1435, 1445**

**Parts List & Mounting Instructions**

Jodale • Perry

Printed: 2004/07

# John Deere 1420, 1435, 1445 Mounting Instructions

## Standard Parts List

<b>Qty</b>	<b>Description</b>	<b>Photo</b>
L&R	Rear Cab Brackets	
L&R	Rear Cab Side Panels (Plastic) installed	
1	Underseat Upholstery	
1	Left Side Pod Upholstery	
1	Right Side Pod Upholstery	
1	Main Cab Floormat (pre-cut)	
1	Left Platform Floormat	
1	Right Platform Floormat	
1	Left Cab Platform Extension Floormat (installed)	
1	Right Cab Platform Extension Floormat (installed)	
2	Cab Lift Brackets (1" Tube)	
2	3/8" Black Snap Caps	
18"	O-rubber, Clip-on, 180°	
12.5 LF	O-rubber, Clip-on, 90°	
8"	NDAX, 1" x 1"	
22"	NDAX, 1/2" x 3/4" (seat plate)	
1	Auxiliary Hydraulics Bracket	

NOTE: All references to left and right are taken from the operator's point of view when he/she is sitting in the driver's seat.

# John Deere 1420, 1435, 1445 Mounting Instructions

## **Electrical Connectors List**

<b>Qty</b>	<b>Description</b>
2	Connectors, Loop, 10GA, ¼”
1	Connectors, Loop, 10GA, ½”
1	Connectors, Loop, 10GA, 3/8”
1	Splicer, Wire, Blue

NOTE: All references to left and right are taken from the operator's point of view when he/she is sitting in the driver's seat.

# John Deere 1420, 1435, 1445 Mounting Instructions

## Standard Bolts List

<b>Qty</b>	<b>Description</b>
4	Bolt, Hex, 5/8" x 2", Grade 8, Yellow Dichrome
2	Bolt, Hex, 1/2" x 3", Grade 8, Yellow Dichrome
2	Bolt, Hex, 1/2" x 4 1/2", Grade 8, Yellow Dichrome
4	Nut, Hex, Nylon Locking, 5/8", Grade 8, Yellow Dichrome
4	Nut, Hex, Nylon Locking, 1/2", Grade 8, Yellow Dichrome
2	Washer, Flat, Rubber, Trimmed 2 sides
2	Washer, Flat, Rubber, Trimmed 1 side
2	Washer, Flat, Steel, 9/16" x 2 1/2" Trimmed 2 sides
2	Washer, Flat, Steel, 9/16" x 2 1/2" Trimmed 1 side
4	Isolator, Rubber, 1/2" x 2 1/2", Black
2	Tube Spacer Lower, 1"OD x 5/8"ID x 11/16"
2	Tube Spacer Upper, 1"OD x 5/8"ID x 5/16"

NOTE: All references to left and right are taken from the operator's point of view when he/she is sitting in the driver's seat.

# John Deere 1420, 1435, 1445 Mounting Instructions

## Optional Parts Lists

### Heater Option (if equipped)

<b>Qty</b>	<b>Description</b>	<b>Photo</b>
14 LF	3/8" Heater Hose	
2	3/8 NPT x 3/8" Barb - 180° Fitting (suction)	
1	16MM x 3/8" Barb - 90° Fitting (pressure)	
2	HS-6 Hose Clamps	
1	Splicer, Rad Hose, 1 1/8"	
2	HS-20 Hose Clamps	

NOTE: All references to left and right are taken from the operator's point of view when he/she is sitting in the driver's seat.

# John Deere 1420, 1435, 1445 Mounting Instructions

NOTE: Use the following torque specifications for all hardware: 1/2" hardware 73 ft-lbs, 3/8" hardware 42 ft-lbs, 5/8" hardware 177 ft-lbs.

1. Prior to cab installation, remove the upper section of the 2-post ROPS guard, remove seat from seat plate.

2. Take the left rear bracket, one short tube spacer, and one long tube spacer and position it onto the left lower 2-post ROPS member. Put the longer tube spacer into the bottom hole of the ROPS, and the shorter tube spacer into the upper ROPS hole and loosely fasten the rear bracket into place using the hardware provided, 5/8" x 2" hex bolts and lock nuts. Ensure that the washer and nut are on the outside of the machine side for space requirements. Repeat for the right rear bracket, see Figure 1.

**Figure 1**



3. Locate the tubing crossmember which is located underneath the operator foot platform. Use Figures 2 and 3 as a guide and drill two 9/16" holes through the tubing crossmember and the foot platform.

**Figure 2**

See attached blueprint

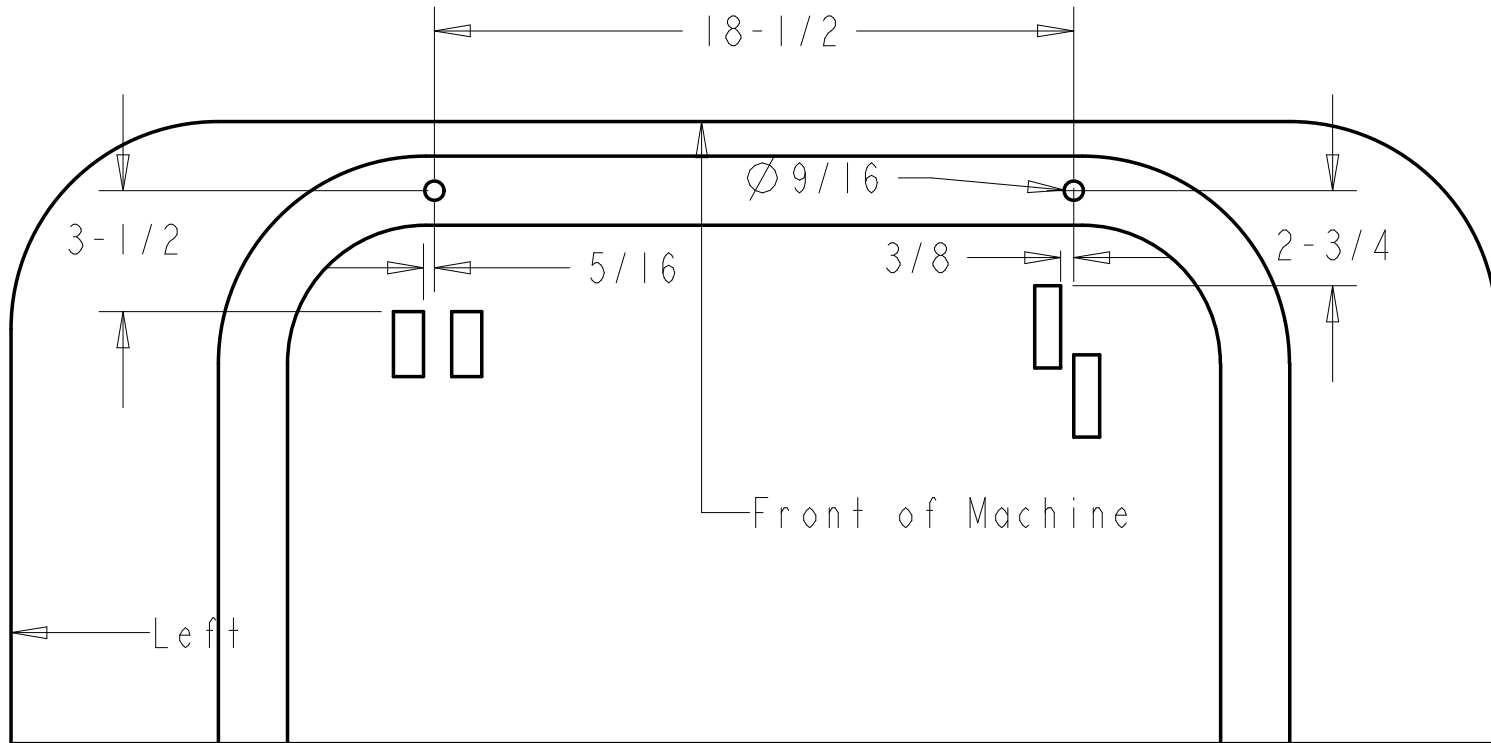


4. Raise the seat plate, then take the left side pod upholstery and position it against the side pod. Ensure the side pod is clean, and glue the upholstery into place. See Figure 4.

5. Take the right side pod upholstery and position it against the right side pod. Ensure there is a clean surface for adhesion, and glue into place. See Figure 5.

NOTE: All references to left and right are taken from the operator's point of view when he/she is sitting in the driver's seat.

	Revision	Decision	Date



Tolerances:  
 Unless otherwise specified  
 X.X = ±1/16"  
 Angular = ± 1.0°

SCALE 0.180

CONFIDENTIALITY NOTICE

This material is property of Jodale Perry Corporation (JDP) or one of its subsidiaries or affiliates and is not to be used by the recipient for any purpose other than the purpose for which it was transmitted. The material remains the property of JDP and shall be returned upon request. The material may not be reproduced or disclosed to third parties without the written consent of JDP

Material		Req'd		<b>JODALE PERRY CORPORATION</b> Box 909, 300 Route 100, Morden MB, Canada			
				Title <b>Front Mount Drill Template</b>			
Drawn By Dave Friesen	Date 2001-05-01	Size A	Part Number	Project John Deere 1400	Rev		
Checked By	Date	Scale	Units Imperial	File Number JDI400PRT0115			

# John Deere 1420, 1435, 1445 Mounting Instructions

**Figure 4**



**Figure 6**

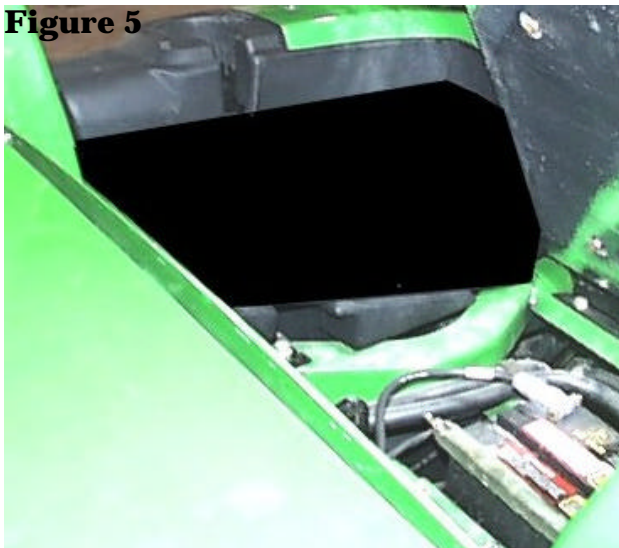


6. Take the underseat upholstery and place it on the seat plate. Ensure that the seat plate is clean so that there is a good surface for bonding and glue the upholstery into place. See Figure 6. Reinstall the seat onto the plate.

**Figure 7**



**Figure 5**



7. Take the  $\frac{1}{2}$ " x  $\frac{3}{4}$ " NDAX and position it against the seat plate near the hinge as shown in Figure 7. Peel back the adhesive and glue into place.

8. Remove the left door, right escape window, and lower right window before proceeding with the following steps. Take the cab lift brackets and bolt them onto the cab frame with the ends sticking away from the frame. Remove the shipping bracket from the rear mounts and prepare to lift the cab with an overhead hoist so that the cab O-rubber can be installed.

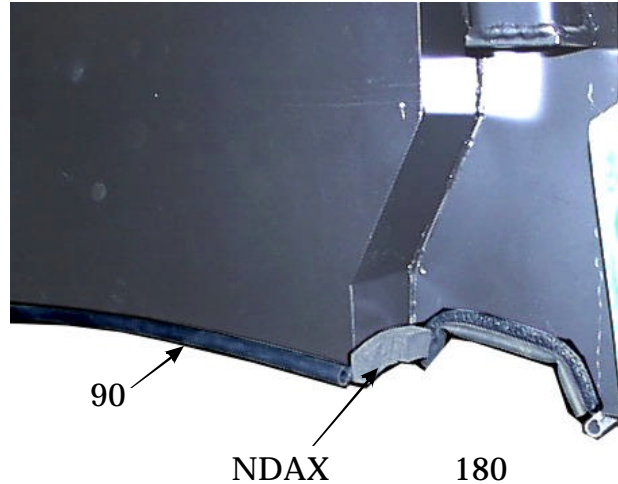
9. Take the 90° O-rubber and beginning at the left rear corner, slide the rubber onto the steel panel with the bulb facing

NOTE: All references to left and right are taken from the operator's point of view when he/she is sitting in the driver's seat.



# John Deere 1420, 1435, 1445 Mounting Instructions

**Figure 8**



**Figure 10**

**Figure 9**



down, and work your way forward and around the cab frame until you reach the same point on the right rear corner of the cab. See Figure 8 & 9. You will have to put a separate piece between the front mount plates.

10. Take the 180° O-rubber, and starting where you stopped in the previous step, slide the rubber onto the panel until you reach the panel shown in Figure 10.

11. Using Figure 10 as a guide take the 1" x 1" NDAX and glue it into the rear panel as shown.

12. From where you left off in the previous step, slide 90° O-rubber onto the rear steel panel and then repeat steps 7 and 8 for the other side. See Figure 10.

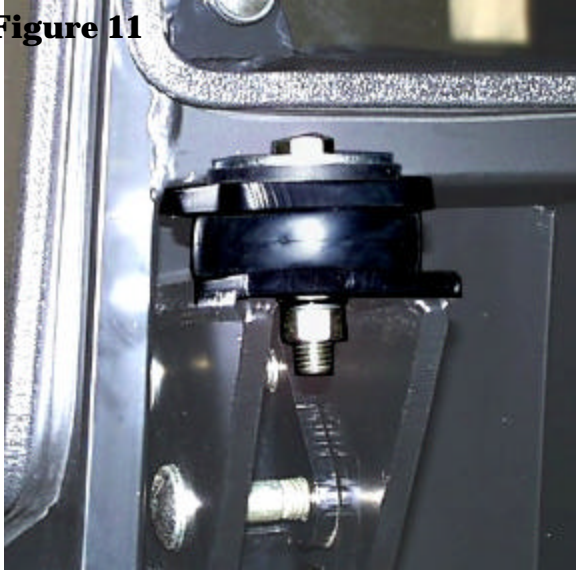
13. Move to the lower two post ROPS, and note the rear steel crossmember bolted to the ROPS member. Loosen all four bolts in order to make the installation of the cab easier. Lift the cab over the machine and slowly lower the cab over the rear mounts. Place one rubber isolator over each of the two rear mounts, and over the two holes drilled into the front platform. Once the cab is lowered onto the rear mounts, take one ½" x 3" hex bolt, one 9/16" x 2 ½" steel flat washer (trimmed 2 sides), one 9/16" x 2 ½" rubber flat washer (trimmed 2 sides), and one ½" nylon locking hex nut and loosely fasten each rear mount.

Repeat for the front mounts, but use ½" x 4 ½" hex bolts instead and loosely fasten the cab down. The front mounts locate

NOTE: All references to left and right are taken from the operator's point of view when he/she is sitting in the driver's seat.

# John Deere 1420, 1435, 1445 Mounting Instructions

**Figure 11**



the cab frame front to back, so tighten the two front mounts to the torque spec first, and then the rear mounts next, and finally the rear cab brackets last. See Figure 11.

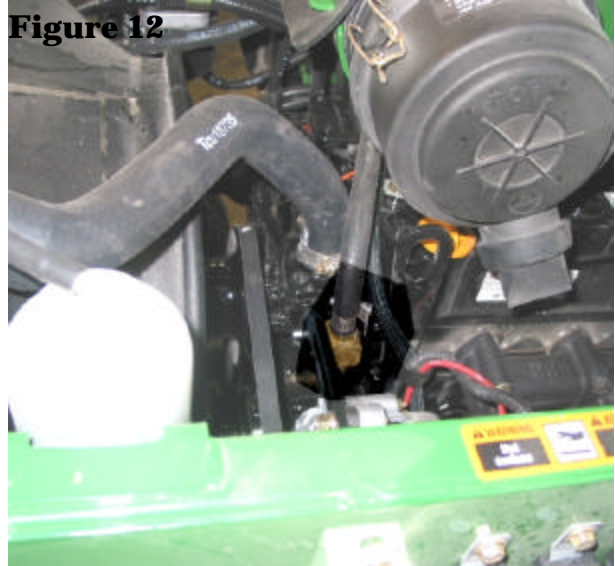
14. Locate the wires at the bottom of the C-Post. Connect the heavy red wire to 12V. Connect the heavy black wire to tractor ground. Connect the orange wire to a switched source on the tractor.

Proceed with steps 15 & 16 if cab is equipped with the heater option only.

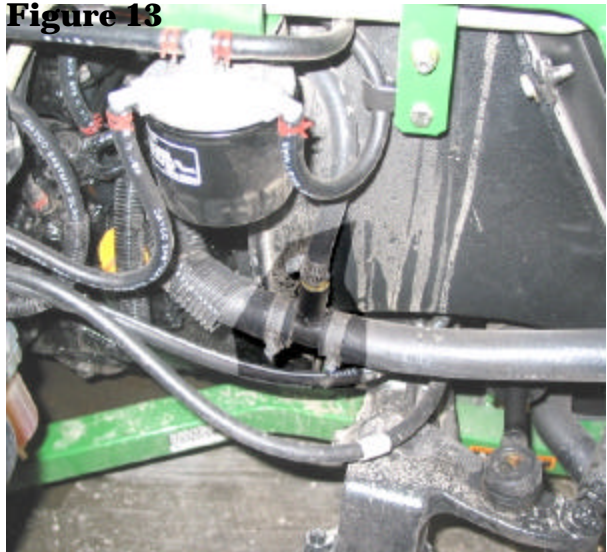
15. Drain antifreeze from engine before proceeding. Prior to proceeding, remove the alternator belt. Remove engine plug from the thermostat housing as shown in Figure 12 in the lower right side. USE A WATER SEALANT MATERIAL AROUND ALL FITTINGS. Insert the 16MM 90° adapter (pressure) into the plug hole. Insert the 3/8 barb" x 3/8NPT 180° fitting into the adapter. Locate the lower rad hose and cut out a short piece. Insert the 1 1/8" rad hose splicer and connect with provide hose clamps. Insert the 3/8 barb x 3/8 NPT 180° fitting (suction) into the splicer. Run the hose

to the heater fittings and ensure that there is adequate hose and then cut the hose. Attach the pressure hose to the pressure fitting and the other hose to the suction fitting. Attach the hose with two HS-6 clamps. Re-install alternator belt when complete.

**Figure 12**



**Figure 13**



16. Refill the engine anti-freeze. Open the cab heater valve using the rotary control on the switchplate and turn on the fan. Start the vehicle and run at PTO RPM for five minutes to build up

NOTE: All references to left and right are taken from the operator's point of view when he/she is sitting in the driver's seat.

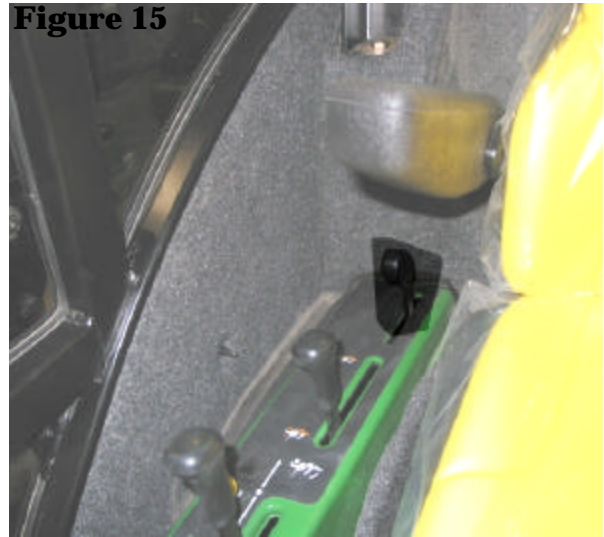
# John Deere 1420, 1435, 1445 Mounting Instructions

engine heat. Check for leaks and add anti-freeze if required. For maximum heater efficiency, all air trapped in the heater system must be evacuated. Continue running the engine and adding antifreeze as required until cab heater produces hot air. TIP: when purging system of air, open radiator cap when running the engine.

**Figure 14**



**Figure 15**



17. Take the floormat and place it onto the operator platform. Ensure that there is adequate clearance around all of the pedals and controls and then glue the floormat into place. See Figure 14.

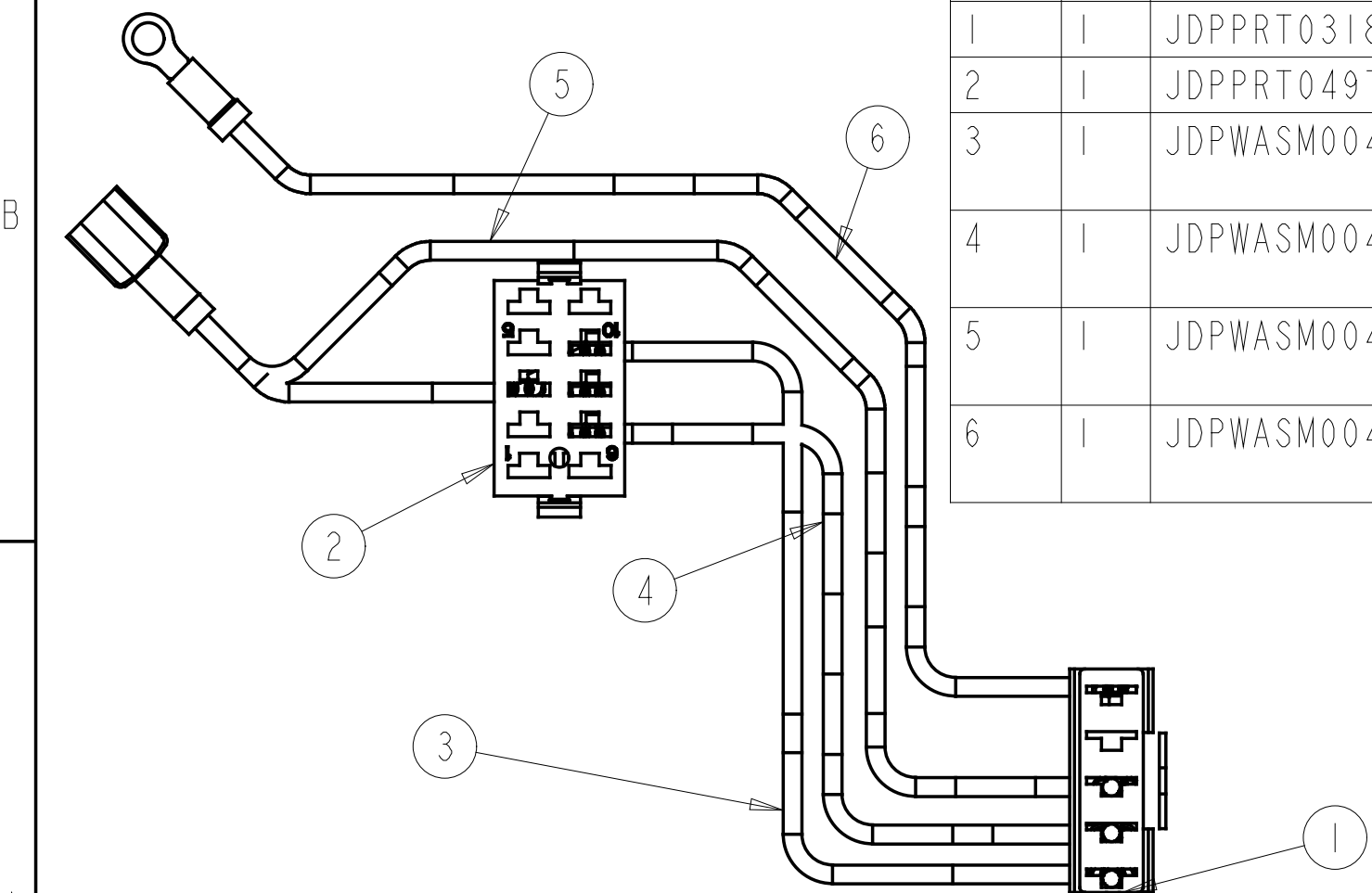
If tractor is equipped with auxiliary hydraulics proceed with Step 18.

18. Remove the factory auxiliary hydraulics lever and replace with cab provided lever. See Figure 15.

NOTE: All references to left and right are taken from the operator's point of view when he/she is sitting in the driver's seat.

	Revision	Decision	Date

Item	Qty	File #	Description
1	1	JDPPRT0318A	Connector
2	1	JDPPRT0497	Connector
3	1	JDPWASM0040_1	L Wiper To Switch #9 & # 3
4	1	JDPWASM0040_2	H Wiper To Switch #7
5	1	JDPWASM0040_3	P Wiper To Switch #8 & Fuse
6	1	JDPWASM0040_4	Ground Wiper To Groud Fuse Block



Tolerances:  
 Unless otherwise specified  
 X.X = ±1/16"  
 Angular = ± 1.0°

SCALE 0.900

CONFIDENTIALITY NOTICE

This material is property of Jodale Perry Corporation (JDP) or one of its subsidiaries or affiliates and is not to be used by the recipient for any purpose other than the purpose for which it was transmitted. The material remains the property of JDP and shall be returned upon request. The material may not be reproduced or disclosed to third parties without the written consent of JDP

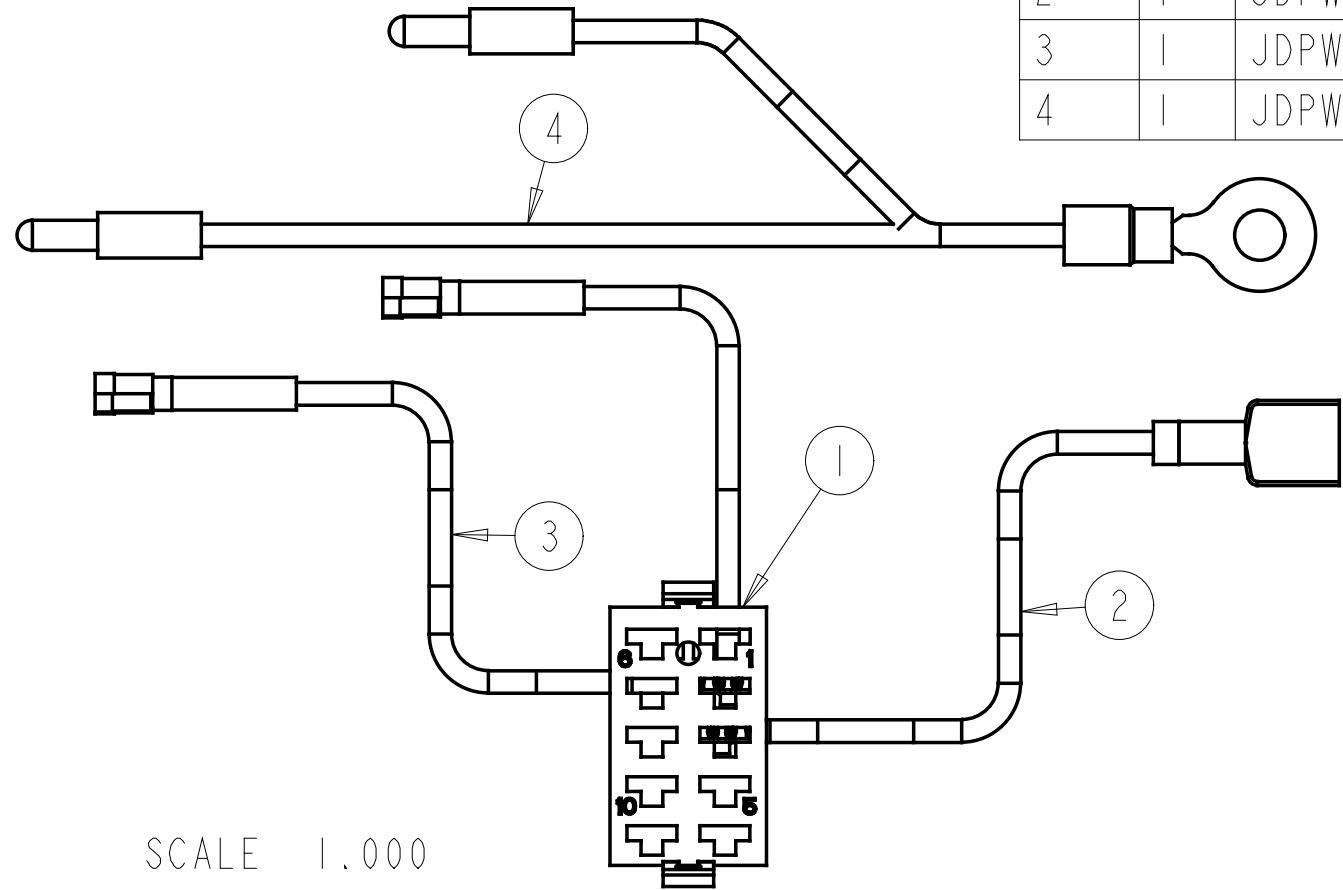
Material	Req'd	<b>JODALE PERRY CORPORATION</b> Box 909, 300 Route 100, Morden MB, Canada			
		Title <b>Wiper Harness</b>			
Drawn By Dave Friesen	Date 2006-01-04	Size A	Part Number	Project	Rev
Checked By	Date	Scale	Units Imperial	File Number JDPWASM0040	

Revision	Decision	Date

Item	Qty	File #	Description
1	1	JDPPRT0497	Connector
2	1	JDPWASM0041_1	Fuse To # 3
3	1	JDPWASM0041-2	# 2 To Light
4	1	JDPWASM0041_3	Light To Ground

B

A



SCALE 1.000

Tolerances:  
 Unless otherwise specified  
 X.X = ±1/16"  
 Angular = ± 1.0°

CONFIDENTIALITY NOTICE

This material is property of Jodale Perry Corporation (JDP) or one of its subsidiaries or affiliates and is not to be used by the recipient for any purpose other than the purpose for which it was transmitted. The material remains the property of JDP and shall be returned upon request. The material may not be reproduced or disclosed to third parties without the written consent of JDP

Material	Req'd	<b>JODALE PERRY CORPORATION</b> Box 909, 300 Route 100, Morden MB, Canada			
		Title <b>Work Light Harness</b>			
Drawn By Dave Friesen	Date 2006-02-02	Size A	Part Number	Project	Rev
Checked By	Date	Scale	Units Imperial	File Number JDPWASM0041	

2

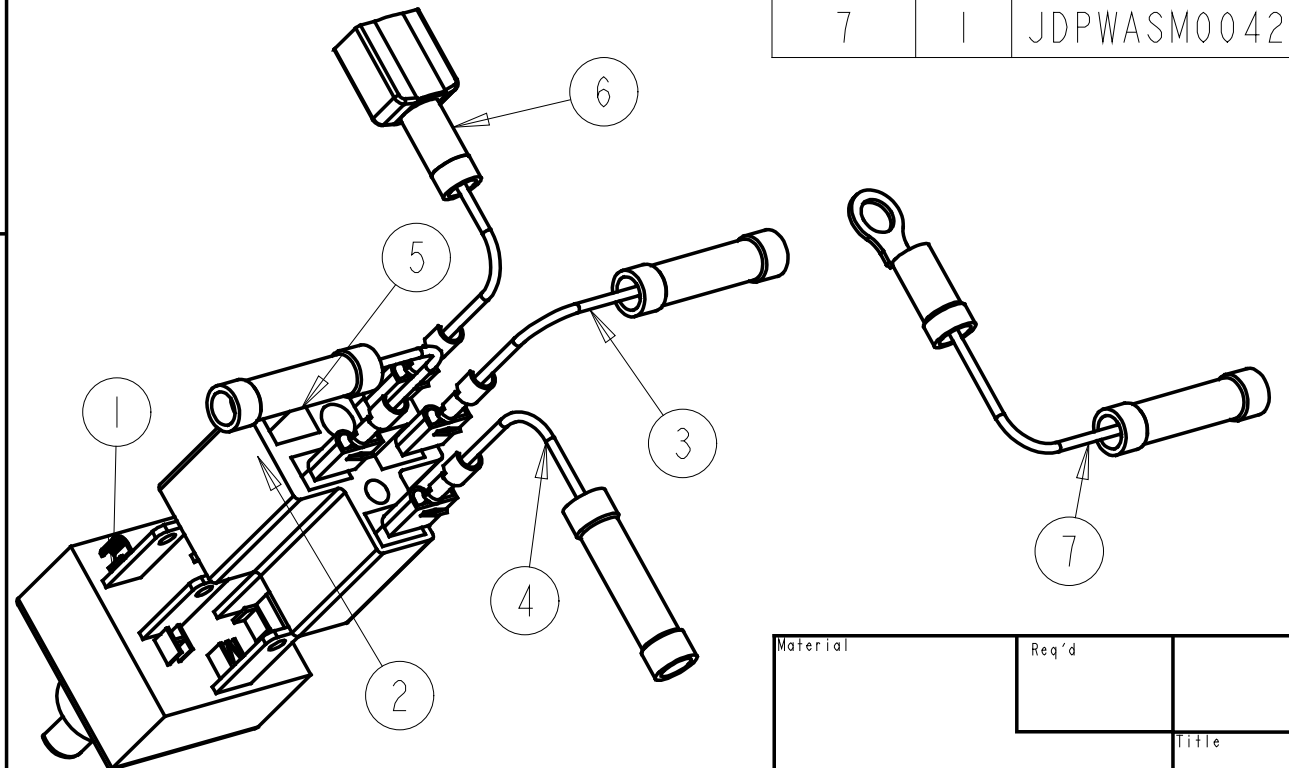
1

	Revision	Decision	Date

Item	Qty	File Number	Description
1	1	JDPPRT0178	3-Speed Fan Switch
2	1	JDPPRT0482	Terminal Block Fan Switch
3	1	JDPWASM0042_1	Low Speed Fan Motor
4	1	JDPWASM0042_2	Medium Speed Fan Motor
5	1	JDPWASM0042_3	Hi Speed Fan Motor
6	1	JDPWASM0042_4	Fuse Power
7	1	JDPWASM0042_5	Motor Ground

B

A



SCALE 1.000

Tolerances:  
 Unless otherwise specified  
 X.X = ±1/16"  
 Angular = ± 1.0°

CONFIDENTIALITY NOTICE

This material is property of Jodale Perry Corporation (JDP) or one of its subsidiaries or affiliates and is not to be used by the recipient for any purpose other than the purpose for which it was transmitted. The material remains the property of JDP and shall be returned upon request. The material may not be reproduced or disclosed to third parties without the written consent of JDP

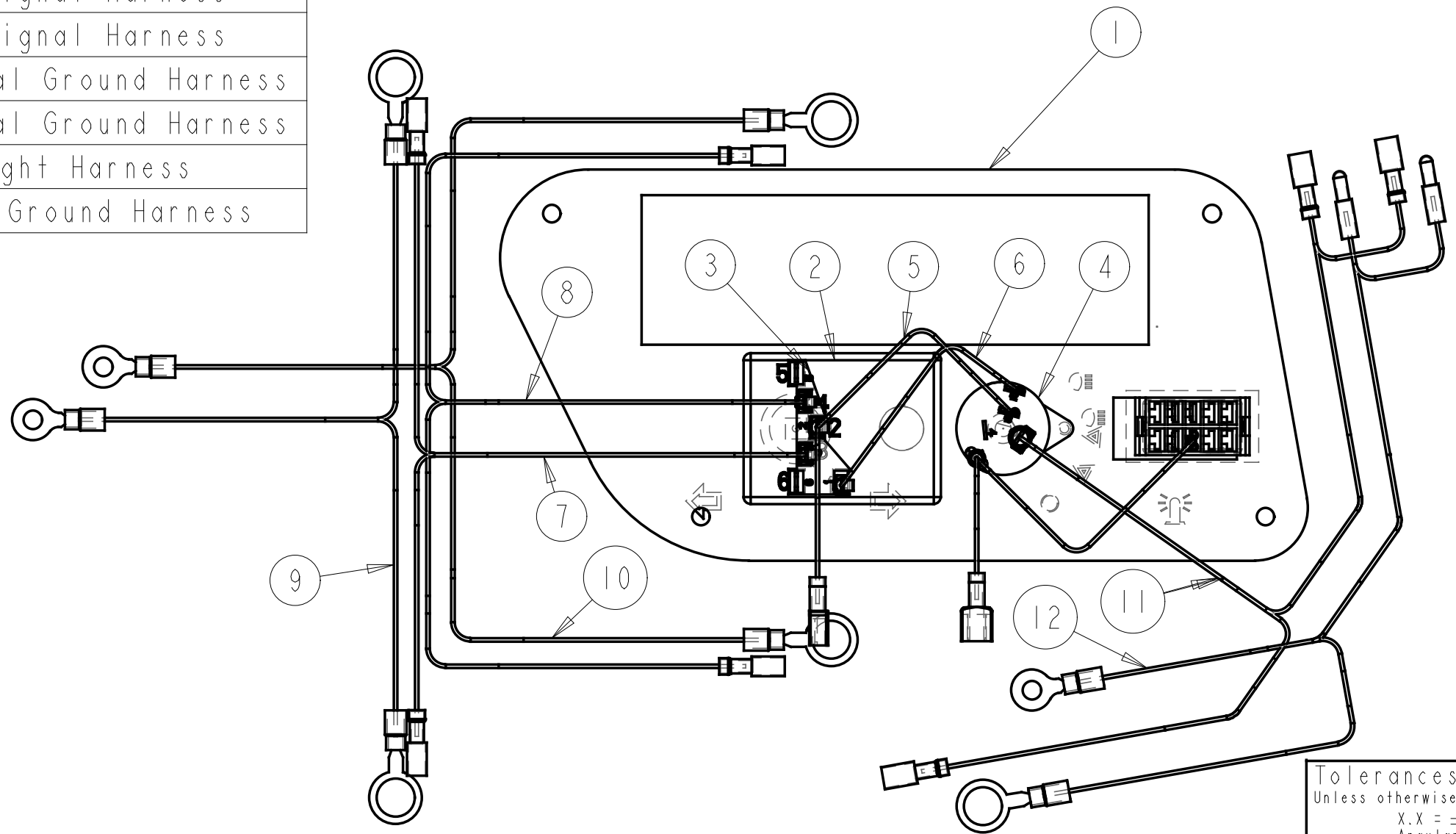
Material	Req'd	<b>JODALE PERRY CORPORATION</b> Box 909, 300 Route 100, Morden MB, Canada			
		Title <b>3-Speed Fan Power Harness</b>			
Drawn By	Date	Size	Part Number	Project	Rev
Dave Friesen	2006-06-07	A		Boxer Parts	
Checked By	Date	Scale	Units	File Number	
			Imperial	JDPWASM0042	

2

1

Item	Qty	File Number	Description
1	1	JDPASM0106	Switch Plate Assembly
2	1	JDPPRT0179	Hobbs Flasher
3	1	JDPPRT0510	Hobbs Connector
4	1	JDPPRT0410	Road Light Switch
5	1	JDPWASM0043-1	Power Harness
6	1	JDPWASM0043-2	Flasher Power Harness
7	1	JDPWASM0043-3	RH Turn Signal Harness
8	1	JDPWASM0043-4	LH Turn Signal Harness
9	1	JDPWASM0043-5	RH Turn Signal Ground Harness
10	1	JDPWASM0043-6	LH Turn Signal Ground Harness
11	1	JDPWASM0043-7	Road Light Harness
12	1	JDPWASM0043-8	Road Light Ground Harness

Revision	Decision	Date



Tolerances:  
 Unless otherwise specified  
 X.X = ± 1.0mm  
 Angular = ± 1.0°

SCALE 0.500

CONFIDENTIALITY NOTICE

This material is property of Jodale Perry Corporation (JDP) or one of its subsidiaries or affiliates and is not to be used by the recipient for any purpose other than the purpose for which it was transmitted. The material remains the property of JDP and shall be returned upon request. The material may not be reproduced or disclosed to third parties without the written consent of JDP.

Material	Req'd	<b>JODALE PERRY CORPORATION</b> Box 909, 300 Route 100, Morden MB, Canada			
Title		BOXER Roadlight Switch Assembly			
Drawn By Dave Friesen	Date 2006-04-28	Size B	Part Number	Project	Rev
Checked By	Date	Scale	Units Imperial	File Number JDPWASM0043	

Item	Qty	Length	Color	File Number	Description
1	1			JDPPRT0497	14GA Switch Connector
2	1	5"	Red	JDPWASM0044_2	# 3 To C on Fan Switch
3	1	10"	White	JDPWASM0044_3	#4 To 85 on relay
4	1			JDPPRT0481	Relay Connector
5	1	6" 4"	Red	JDPWASM0044_1	# 30 on relay to fuse block
6	1	9"	Black	JDPWASM0044_4	# 86 on relay to ground
7	1	18"	White	JDPWASM0044_5	# 87 to freeze switch
8	1			JDPPRT0519	Freeze Switch
9	1	18"	White	JDPWASM0044_6	Freeze Switch to drier
10	1			JDPPRT0427	Reciever Drier
11	1		White	JDPWASM0044_7	Drier to compressor
12	1			JDPPRT0321	Relay

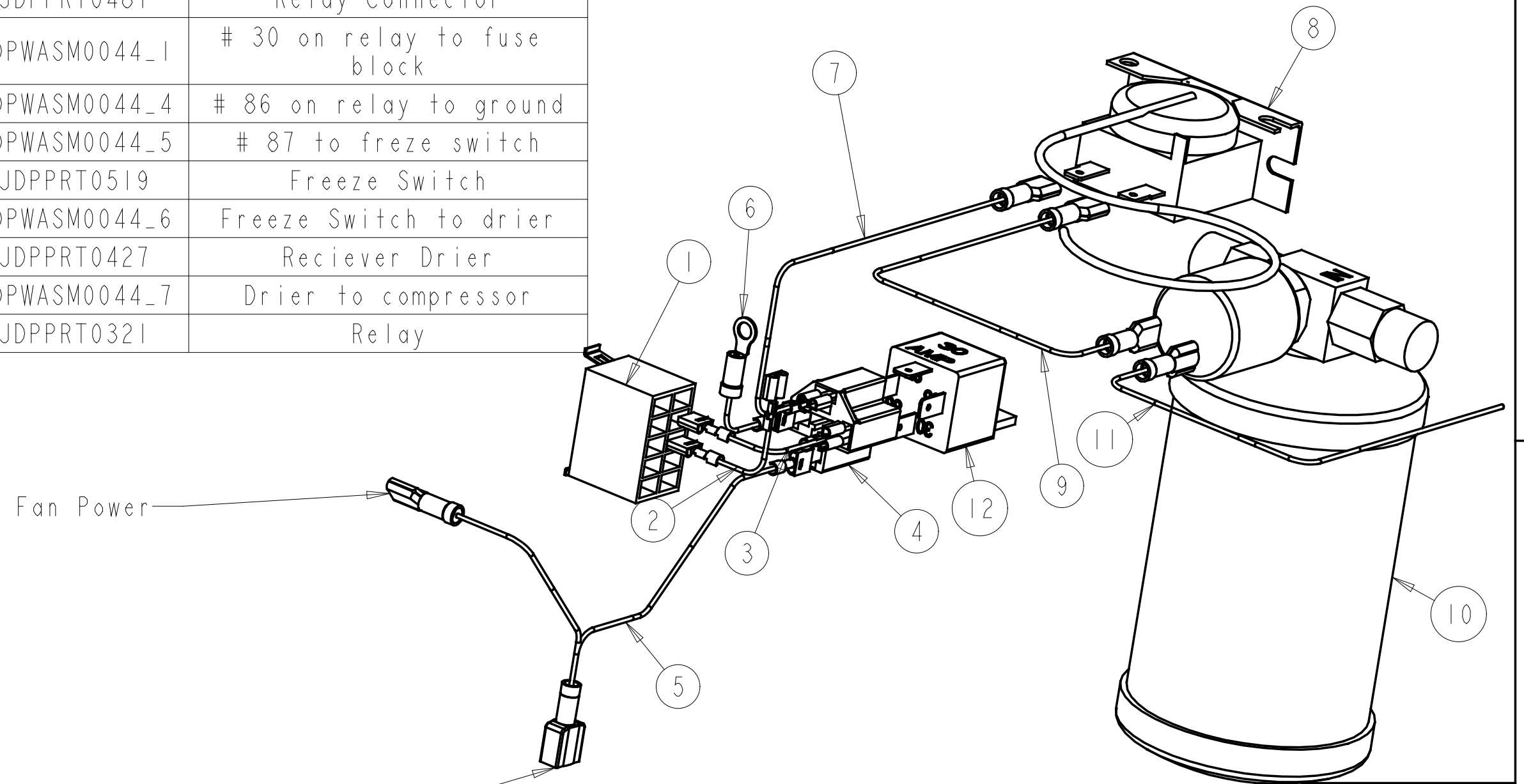
Revision	Decision	Date

B

B

A

A



Fan Power

To Fuse

Tolerances:  
 Unless otherwise specified  
 X.X = ± 1.0mm  
 Angular = ± 1.0°

## CONFIDENTIALITY NOTICE

This material is property of Jodale Perry Corporation (JDP) or one of its subsidiaries or affiliates and is not to be used by the recipient for any purpose other than the purpose for which it was transmitted. The material remains the property of JDP and shall be returned upon request. The material may not be reproduced or disclosed to third parties without the written consent of JDP.

SCALE 0.700

2

Material	Req'd	<b>JODALE PERRY CORPORATION</b> Box 909, 300 Route 100, Morden MB, Canada			
Title		A/C Power Harness			
Drawn By Dave Friesen	Date 2006-06-07	Size B	Part Number	Project	Rev
Checked By	Date	Scale	Units Imperial	File Number JDPWASM0044	