









New Holland
TC35DA, TC40DA, TC45DA
Parts List & Mounting Instructions

Jodale • Perry

Printed: 2004/08

New Holland TC35, TC40, TC45 Mounting Instructions

Standard Parts List

Qty	Description	Photo
L&R	Front Bracket	
L&R	Rear Bracket	
L&R	Lower Hood Shield	 
L&R	Pedal Enclosure Shields	 
L&R	Front Bracket Loader Spacers (no loader)	
L&R	Front Bracket Mower Spacers (no mower)	
2	Cab Lift Brackets (2" Tube)	
2	3/8" Black Snap Caps	
20 LF	180° O-rubber	
1	Under seat Upholstery Pattern	
1	Left Hydrostatic Floormat	
1	Right Hydrostatic Floormat	
1	Step	
2	Grommets, Rubber, Slit (315-315)	

NOTE: All references to left and right are taken from the operator's point of view when he/she is sitting in the driver's seat.

New Holland TC35, TC40, TC45 Mounting Instructions

Electrical Connectors List

Qty	Description
2	Connectors, Loop, 10GA, ¼”
1	Connectors, Loop, 10GA, ½”
1	Connectors, Loop, 10GA, 3/8”
1	Splicer, Wire, Blue
L&R	Light Mounting Brackets
20	Connector, Butt, Blue, 14GA
4	Bolt, Flange, 5/16” x 1”, YD
4	Nut, Flange, 5/16”
4	10” Wire, 16GA, Red
4	10” Wire, 16GA, Black
2	10” Wire, 16GA, White
2	24”, Loom, 5/8”

NOTE: All references to left and right are taken from the operator's point of view when he/she is sitting in the driver's seat.

New Holland TC35, TC40, TC45 Mounting Instructions

Standard Bolts List

Qty	Description
6	Bolt, Carriage, 5/8"x 3 1/2", Grade 8, Yellow Dichrome
4	Bolt, Hex, 5/8" x 3", Grade 8, Yellow Dichrome
8	Bolt, Hex, 16MM x 2.0 x 100MM, Grade 10.9, Yellow Dichrome
6	Nut, Hex, 5/8", Grade 8, Yellow Dichrome
14	Washer, Lock, 5/8"
4	Washer, Flat, 5/8" x 2", Yellow Dichrome
4	Washer, Rubber, 5/8" x 2 1/2"
4	Isolator, Rubber, 5/8" x 2"
14	Nut, Flange, 1/4", Macro-black
14	Bolt, Flange, 1/4" x 3/4", Yellow Dichrome
2	Nut, Flange, M8 x 1.25, Yellow Dichrome
2	Bolt, Flange, 3/8" x 3/4", Yellow Dichrome
4	Nut, Hex, Nylon-Locking, 5/8", Grade 8, Yellow Dichrome

NOTE: All references to left and right are taken from the operator's point of view when he/she is sitting in the driver's seat.

New Holland TC35, TC40, TC45 Mounting Instructions

Optional Parts Lists

Heater Option (if equipped)

Qty	Description	Photo
1	3/8 NPT x 5/8" barb 180° fitting (suction)	
1	3/8 NPT x 5/8" barb 90° fitting (pressure)	
2	HS-10 Hose Clamps	
30 LF	5/8" Heater Hose	

NOTE: All references to left and right are taken from the operator's point of view when he/she is sitting in the driver's seat.

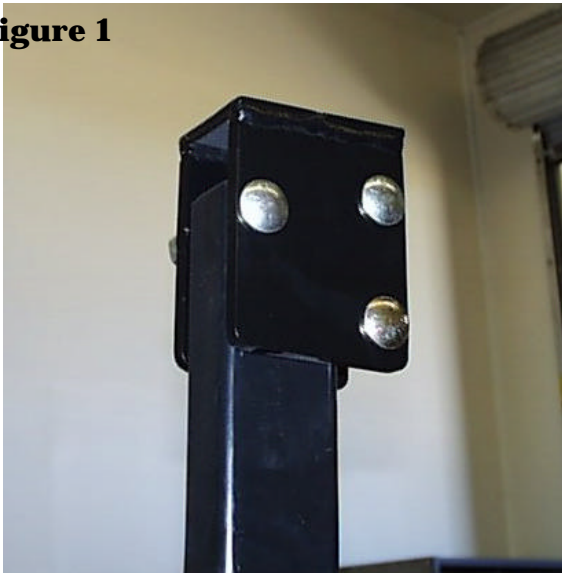
New Holland TC35, TC40, TC45 Mounting Instructions

NOTE: Use the following torque specifications for all hardware: ½" hardware 73 ft-lbs, 3/8" hardware 42 ft-lbs, 5/8" hardware 177 ft-lbs.

1. Remove the upper 2-post ROPS section and hardware, left and right grab handles, disconnect flashers, remove seat from seat pan.

2. Take the left rear bracket and position it on the lower left ROPS member and loosely fasten with the 5/8" hex nuts, 5/8" x 3 ½" carriage bolts, and 5/8" lock washers provided. See Figure 1. Repeat for the right rear bracket.

Figure 1



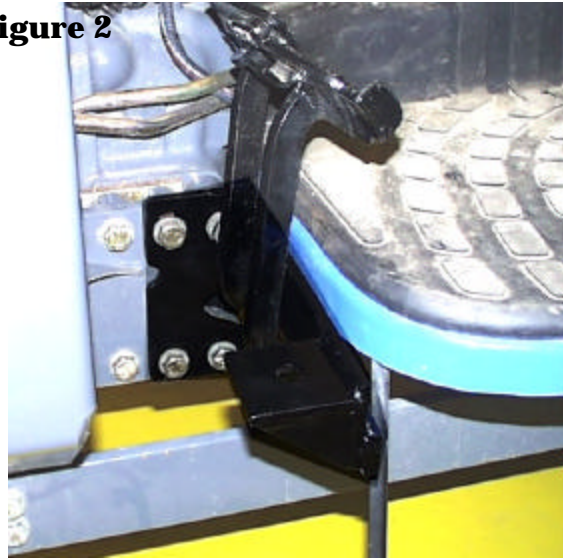
NOTE for all models: In order to install the right front mounting bracket, the forward hydrostatic pedal must be un-bolted from underneath the operator platform in order to get the bolts on.

Proceed with step 3 only if cab is equipped with a New Holland front-end loader.

3. Take the left front bracket and position it near bell housing. Remove factory hardware for rear four fasteners,

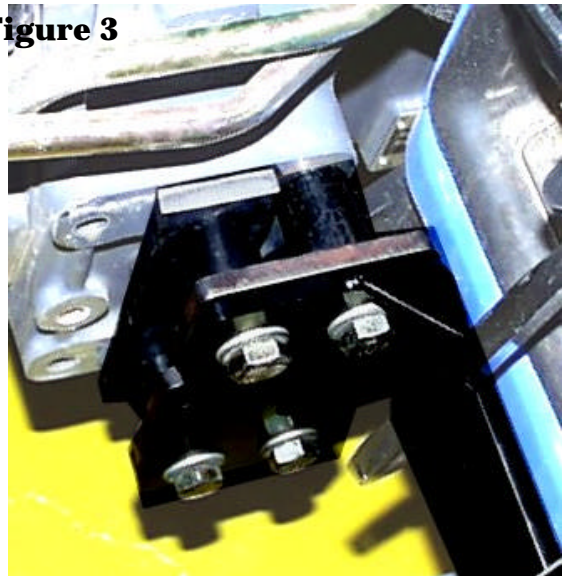
and use supplied 16MM x 2.0 x 100MM hex bolts, and 5/8" lock washers and loosely fasten bracket into place. See Figure 2. Repeat for the right front bracket.

Figure 2



Proceed with step 4 if tractor is equipped only with New Holland under-belly mower and no other front attachments.

Figure 3



4. Take the provided left front bracket spacer and position it over the mower mounting plate, and remove the factory hardware. Place the left front cab

NOTE: All references to left and right are taken from the operator's point of view when he/she is sitting in the driver's seat.

New Holland TC35, TC40, TC45 Mounting Instructions

bracket over the spacer, and use supplied 16MM x 2.0 x 100MM hex bolts, and 5/8" lock washers and loosely fasten bracket into place. See Figure 3. Repeat for the right front bracket.

Proceed with step 5 if tractor has no attachments on the bell housing.

5. Use the mower bracket spacer, and loader spacer along with the left front bracket and loosely fasten into place with the 16MM x 2.0 x 100MM hex bolts provided. Repeat for the right side. See Figure 4.

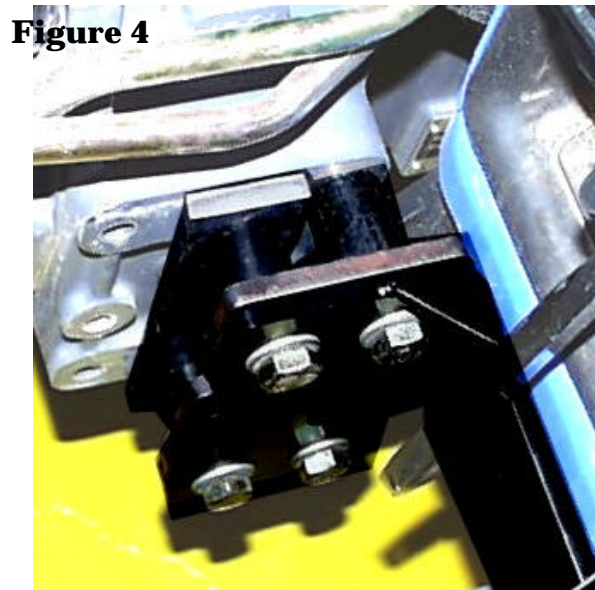


Figure 4

6. Take the underseat upholstery pattern and position it over the seat pan and rear fuel tank panel. Remove the upper fuel plate panel and lower fuel plate panel and move the convoluted tubing aside. Remove the plastic left and right control covers as well in order to tuck the upholstery behind them. Both plates are to be re-installed over the upholstery after it is installed. Line up the front of the upholstery with the front of the seat plate, and glue into place.

Re-install control covers and fuel tank panels. See Figure 5.

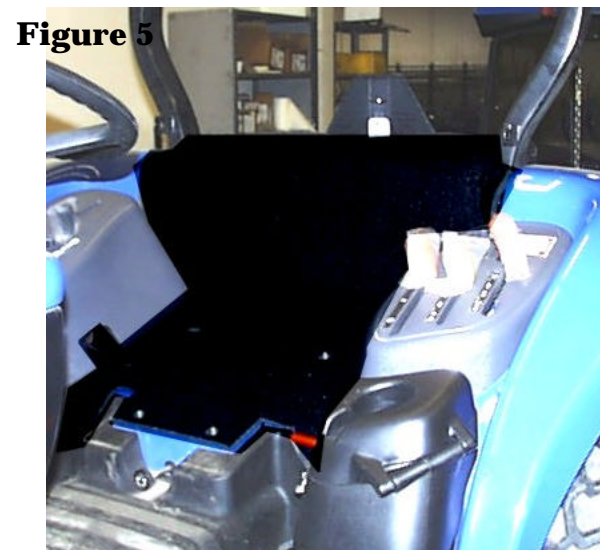


Figure 5

7. Re-attach the left seat belt hang-up bracket onto the lower 2-post ROPS with the factory bolt, washer, and M8 flange nut provided. Repeat for the right side.

NOW you are ready to install the cab. Before proceeding, remove the left door, right upper escape window, and lower right side window in order to attach the cab lift brackets.

8. Take the two cab lift brackets and attach to the cab frame through the hole provided in the frame above the B-Post. Take the 180° O-rubber and starting in the left corner near the bottom of the door, slide the O-rubber onto the steel panel, and work your way around the cab until you reach the same position on the right side of the cab. See Figure 6.

9. Proceed to the left lower portion of the steel hood shield. Take the 180° O-rubber and slide it onto the steel panel and work your way around the panel until you reach the same spot on the right side. See Figure 7.

NOTE: All references to left and right are taken from the operator's point of view when he/she is sitting in the driver's seat.

New Holland TC35, TC40, TC45 Mounting Instructions

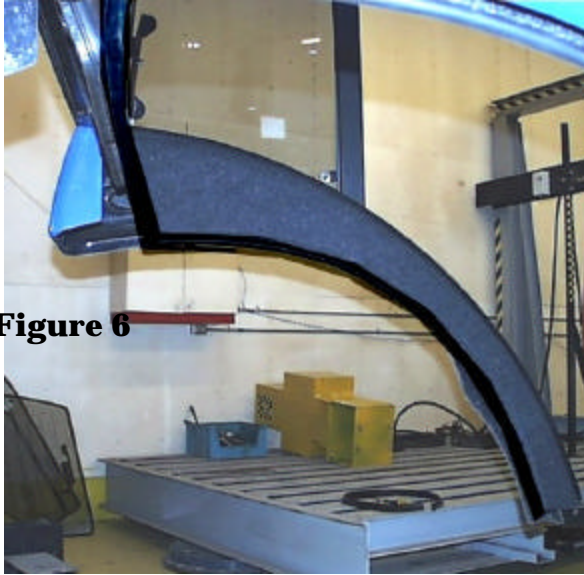


Figure 6

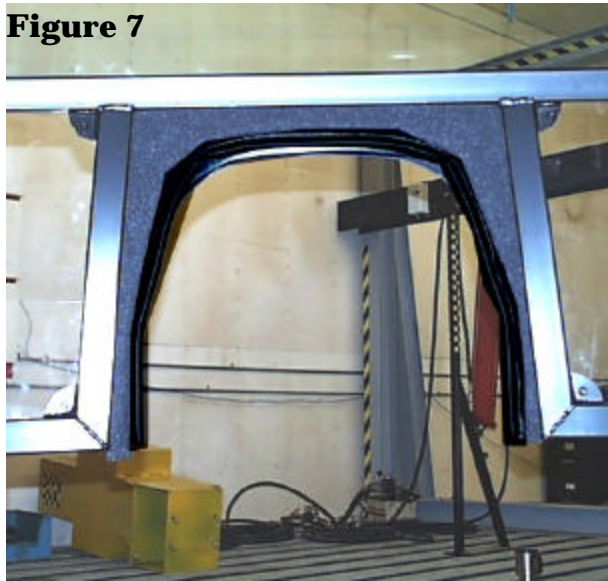


Figure 7

10. Lift the cab over the tractor and slowly lower unit over the mounting pads. Place one rubber isolator over each mount. Lower the cab until the cab mount is on the tractor mounted brackets from the previous steps and use the provided hardware to fasten the cab frame down, 5/8" x 3" hex bolt, 5/8" x 2" steel flat washer, 5/8" x 2 1/2" rubber flat washer, 5/8" lock washer, and 5/8" hex nut. See Figure 8. Use provided torque settings for all mounting hardware.

11. Remove bottom bolt from plastic hood shield fascia before proceeding. Peel back hood shield upholstery as shown in Figure 9. Take the left lower hood shield and position it along the lower window crossmember and the bell housing. Slide 180° O-rubber onto the contoured edge of the panel starting from the top until you reach the bend. Position shield against tractor bell housing, over welded sheet-metal panel on cab, and over lower window crossmember so that the shield is sealing along bell housing. Drill two holes on the left side of the panel and fasten to welded on panel on cab. Drill one hole through steel hood shield and panel and fasten on top. Use 1/4" x 3/4" flange bolts and nuts to fasten shield.

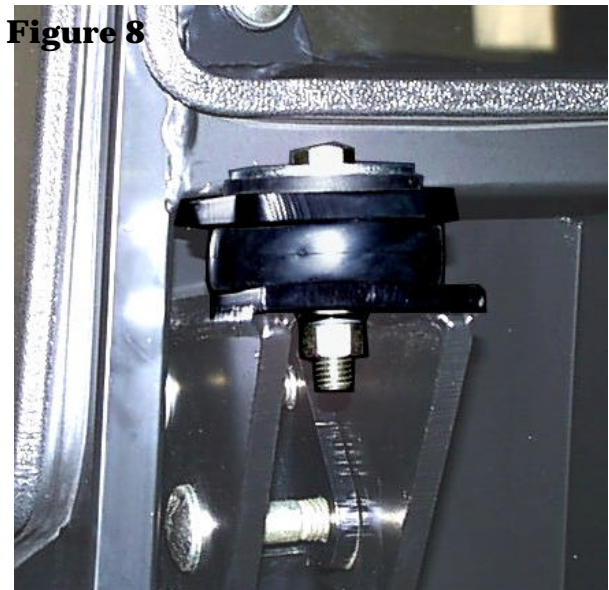


Figure 8

12. Take the left pedal shield and slide 180° O-rubber onto the smaller bent edge of the panel as shown in Figure 9. Slide the shield over the pedals and against the bell housing of the tractor. Line up the slots of the two shields and bolt together with 1/4" x 3/4" flange bolts and nuts. Drill one hold through the front of bottom shield and another hole

NOTE: All references to left and right are taken from the operator's point of view when he/she is sitting in the driver's seat.

New Holland TC35, TC40, TC45 Mounting Instructions

through the platform extension behind the mounting bracket plate. Use provided hardware to fasten.

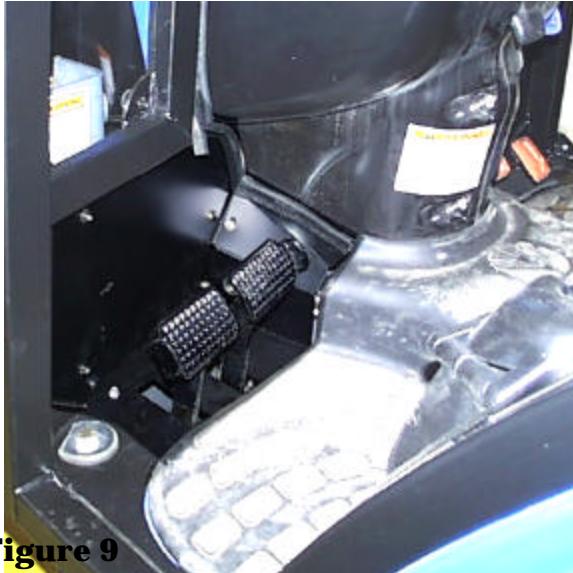


Figure 9

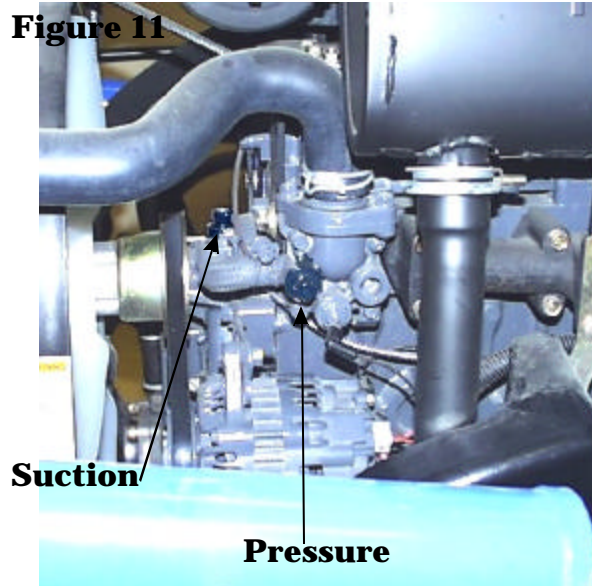


Figure 10

13. Repeat steps 11 and 12 for the right side, and use Figure 10.

14. Take the left pedal floor mat and position over the shield installed in step 12. Glue floor mat into place. See Figure 11. Repeat for the right pedal floor mat.

Figure 11



Suction

Pressure

If cab is equipped with the heater option proceed with the following steps.

15. Drain antifreeze from engine before proceeding. Remove engine plug from the thermostat housing as shown in Figure 11, right beside the thermostat sensor for the pressure connection. USE A WATER SEALANT MATERIAL AROUND ALL FITTINGS. Insert the 3/8 NPT x 5/8" barb 90° fitting (pressure) into the plug hole. Remove plug shown in Figure 11 in the background near the fan belt as indicated. Insert the 3/8 NPT x 5/8" barb 180° fitting (suction) into the plug hole. Run the hose to the heater fittings and ensure that there is adequate hose and then cut the hose. Attach the pressure hose to the pressure fitting and the other hose to the suction fitting. Attach the hose with two HS-10 clamps.

16. Refill the engine anti-freeze. Open the cab heater valve using the rotary control on the switchplate and turn on the fan. Start the vehicle and run at PTO RPM for five minutes to build up

NOTE: All references to left and right are taken from the operator's point of view when he/she is sitting in the driver's seat.

New Holland TC35, TC40, TC45 Mounting Instructions

engine heat. Check for leaks and add anti-freeze if required. For maximum heater efficiency, all air trapped in the heater system must be evacuated. Continue running the engine and adding antifreeze as required until cab heater produces hot air. TIP: when purging system of air, open radiator cap when running the engine.

17. Once installation is complete, take a black silicone sealant and seal all shields, floormat, and upholstery.

18. Take the step and the two 3/8" x 3/4" flange bolts provided and bolt step onto step mount plate which is located beneath the lower crossmember at the bottom of the door entry. See Figure 12.

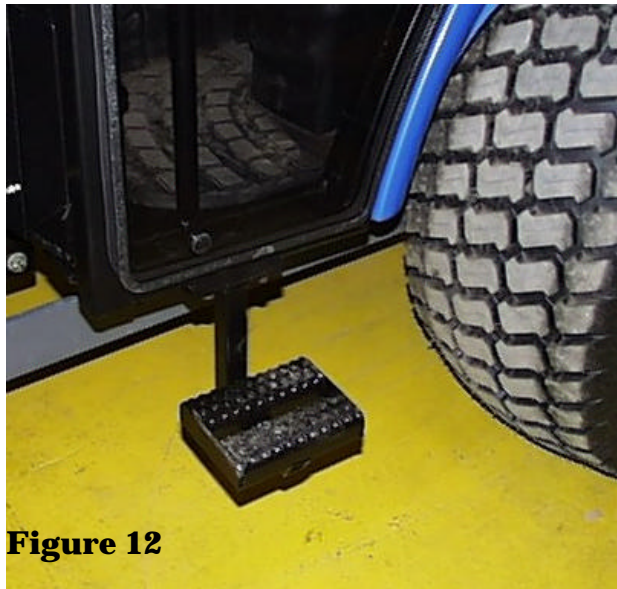


Figure 12

19. Locate the wires at the bottom of the A-Post. Connect the heavy red wire to 12V on the tractor. Connect the heavy black wire to the tractor ground. Connect the orange wire to a switch source on the tractor (at alternator).

20. Remove the left rear plastic fascia panel to re-install taillight. Insert the slit

rubber grommet through the pre-drilled hole in the panel. Take the harness wire on the light and route through the grommet and connect on the harness plug on the tractor.

21. Bolt the light to the bracket mount provided on the C-post with the factory hardware. Re-install the plastic panel. See Figure 13.

22. Repeat steps 20 & 21 for the right side and see Figure 14.



Figure 13

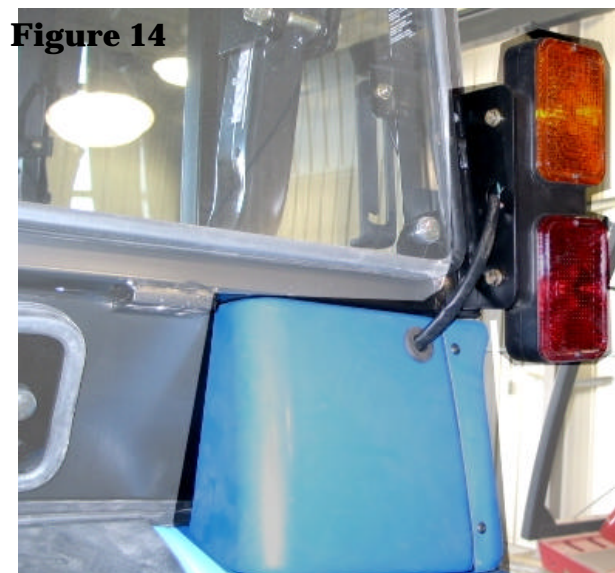
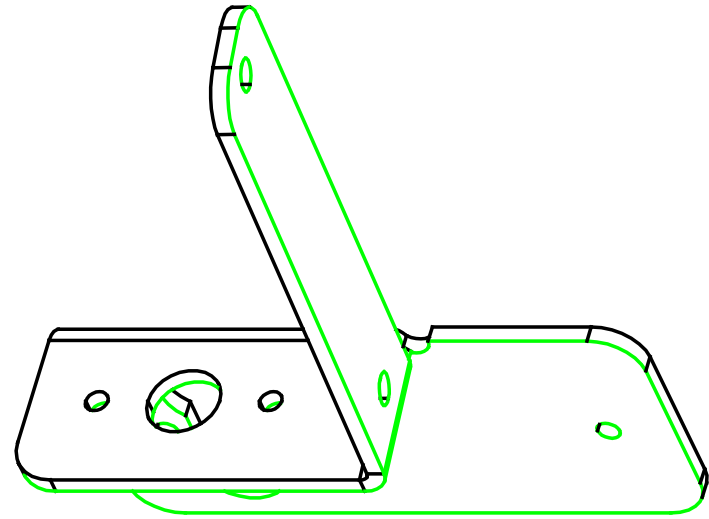
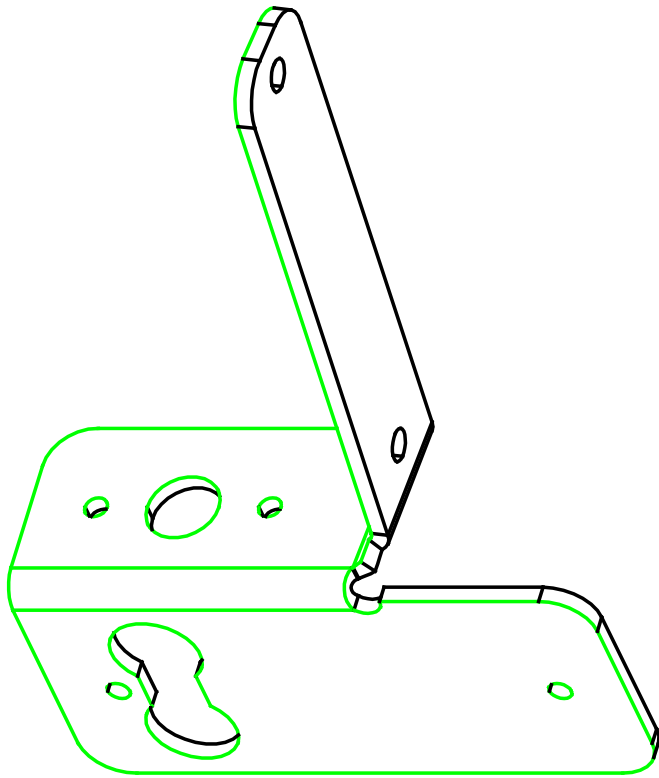


Figure 14

NOTE: All references to left and right are taken from the operator's point of view when he/she is sitting in the driver's seat.



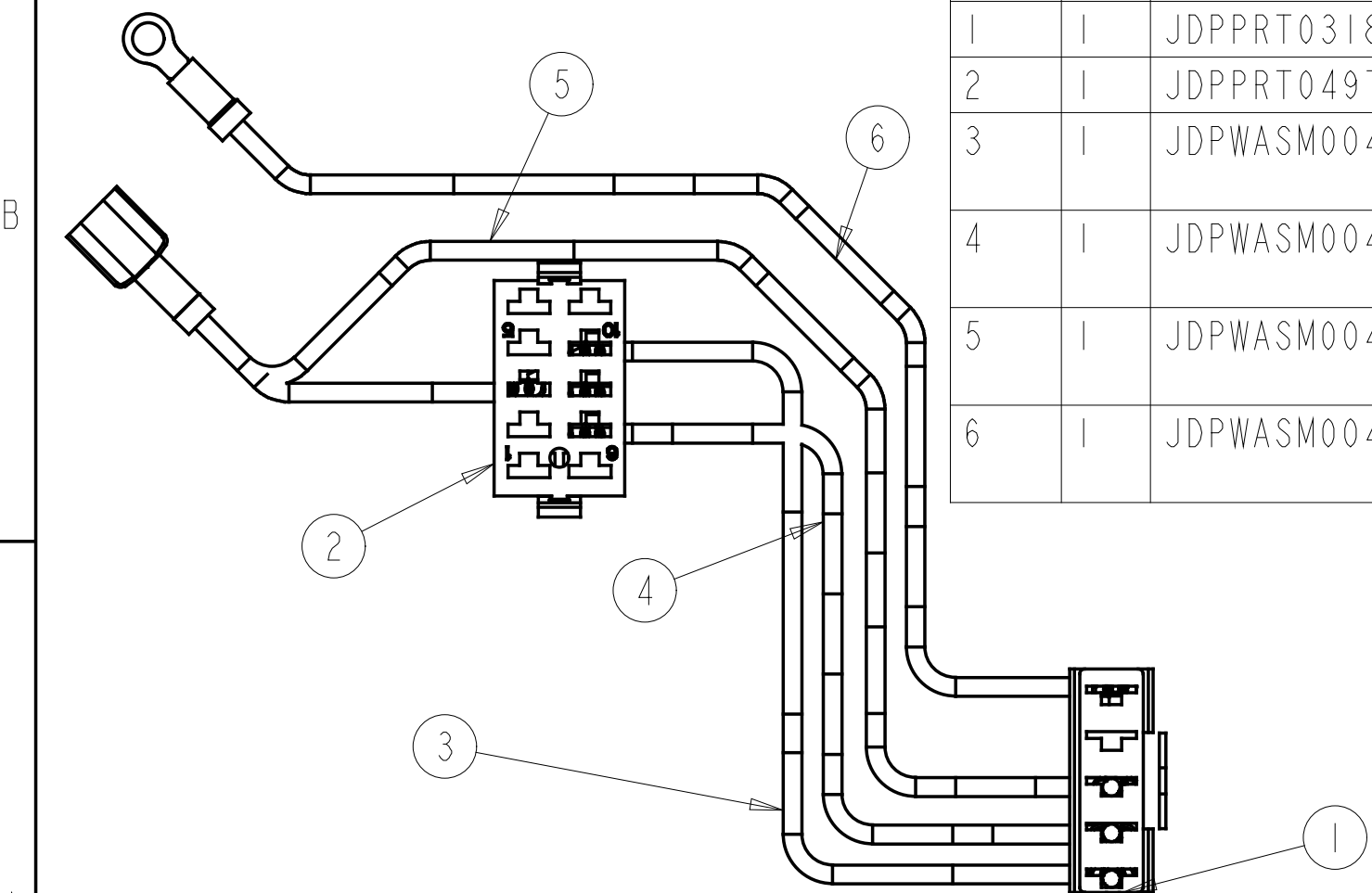
L&R

Flasher Adapter Bracket

NHTC45PRT0125

	Revision	Decision	Date

Item	Qty	File #	Description
1	1	JDPPRT0318A	Connector
2	1	JDPPRT0497	Connector
3	1	JDPWASM0040_1	L Wiper To Switch #9 & # 3
4	1	JDPWASM0040_2	H Wiper To Switch #7
5	1	JDPWASM0040_3	P Wiper To Switch #8 & Fuse
6	1	JDPWASM0040_4	Ground Wiper To Groud Fuse Block



Tolerances:
 Unless otherwise specified
 X.X = ±1/16"
 Angular = ± 1.0°

SCALE 0.900

CONFIDENTIALITY NOTICE

This material is property of Jodale Perry Corporation (JDP) or one of its subsidiaries or affiliates and is not to be used by the recipient for any purpose other than the purpose for which it was transmitted. The material remains the property of JDP and shall be returned upon request. The material may not be reproduced or disclosed to third parties without the written consent of JDP

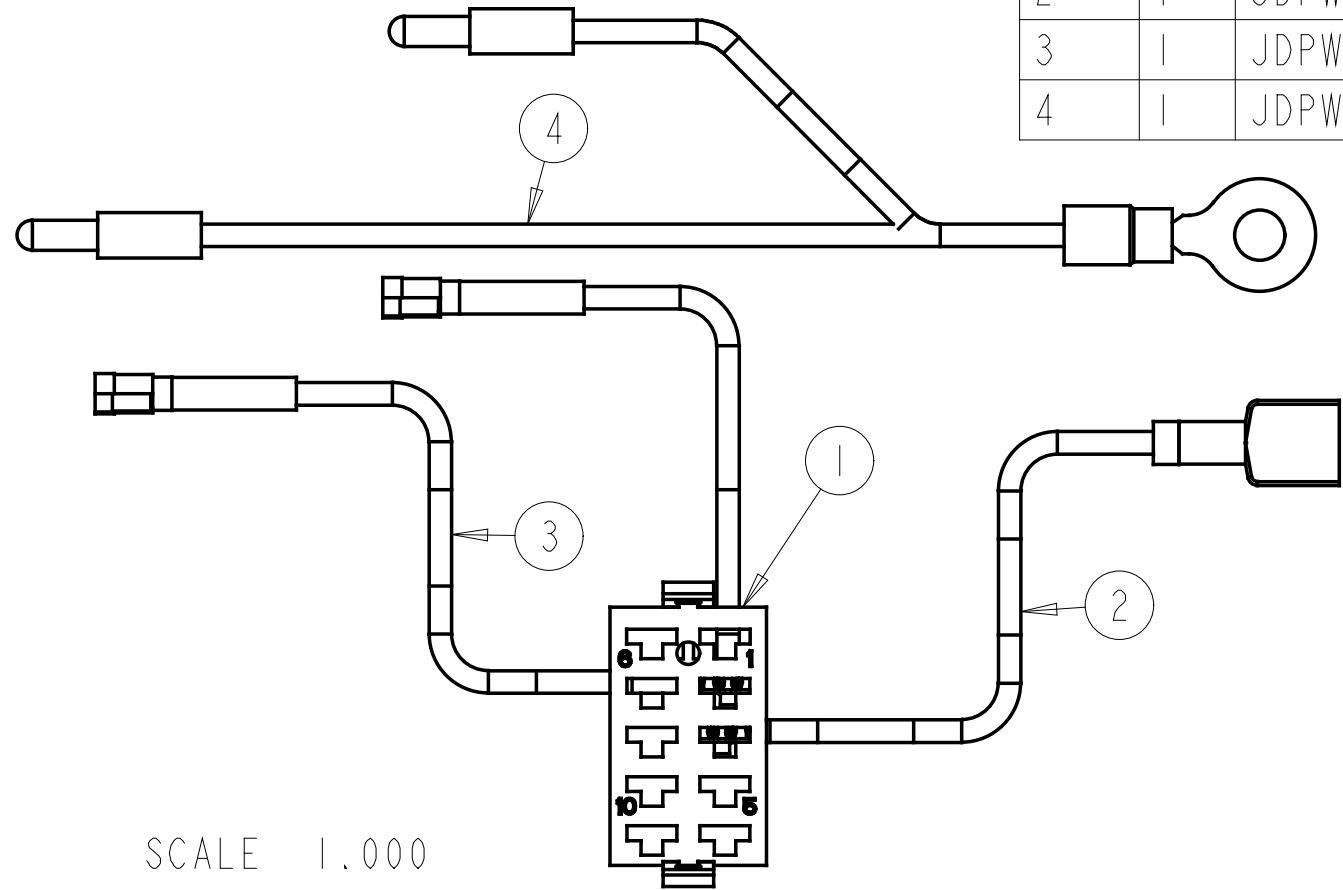
Material	Req'd	JODALE PERRY CORPORATION Box 909, 300 Route 100, Morden MB, Canada			
		Title Wiper Harness			
Drawn By Dave Friesen	Date 2006-01-04	Size A	Part Number	Project	Rev
Checked By	Date	Scale	Units Imperial	File Number JDPWASM0040	

Revision	Decision	Date

Item	Qty	File #	Description
1	1	JDPPRT0497	Connector
2	1	JDPWASM0041_1	Fuse To # 3
3	1	JDPWASM0041-2	# 2 To Light
4	1	JDPWASM0041_3	Light To Ground

B

A



SCALE 1.000

Tolerances:
 Unless otherwise specified
 X.X = ±1/16"
 Angular = ± 1.0°

CONFIDENTIALITY NOTICE

This material is property of Jodale Perry Corporation (JDP) or one of its subsidiaries or affiliates and is not to be used by the recipient for any purpose other than the purpose for which it was transmitted. The material remains the property of JDP and shall be returned upon request. The material may not be reproduced or disclosed to third parties without the written consent of JDP

Material	Req'd	JODALE PERRY CORPORATION Box 909, 300 Route 100, Morden MB, Canada			
		Title Work Light Harness			
Drawn By Dave Friesen	Date 2006-02-02	Size A	Part Number	Project	Rev
Checked By	Date	Scale	Units Imperial	File Number JDPWASM0041	

2

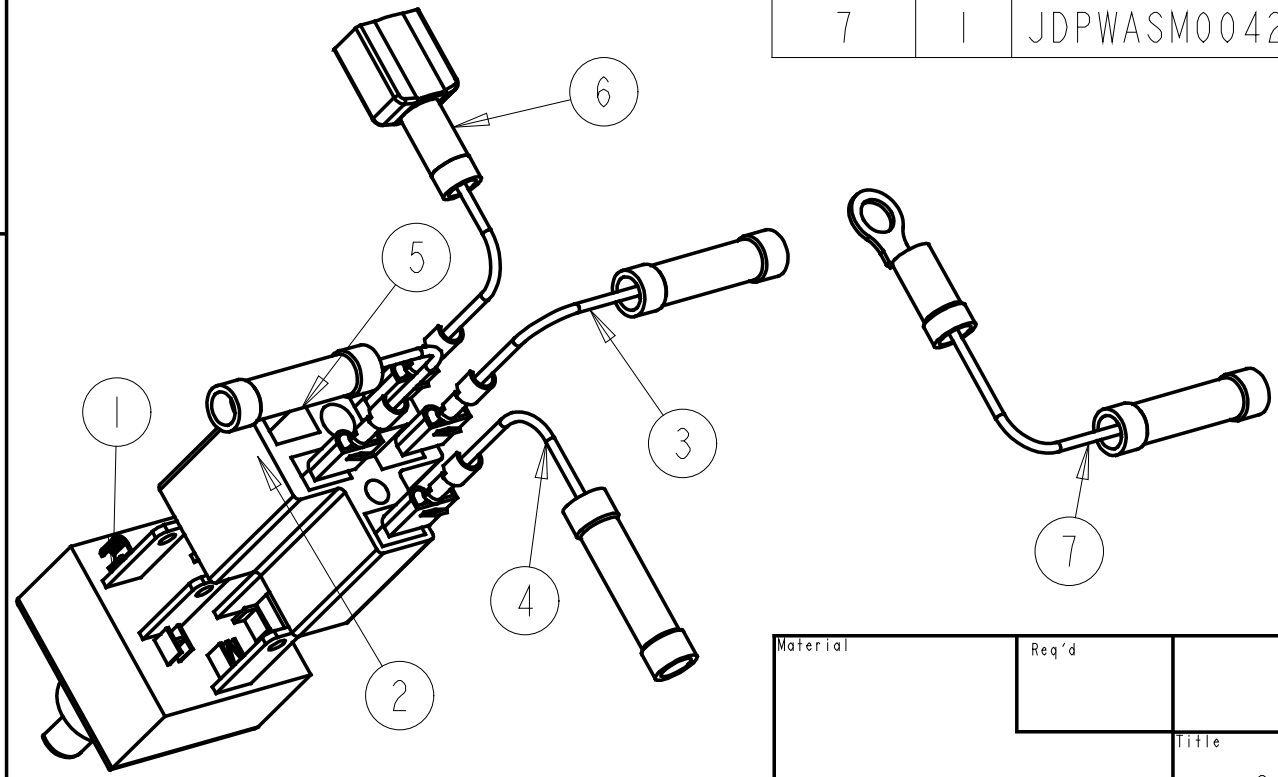
1

	Revision	Decision	Date

Item	Qty	File Number	Description
1	1	JDPPRT0178	3-Speed Fan Switch
2	1	JDPPRT0482	Terminal Block Fan Switch
3	1	JDPWASM0042_1	Low Speed Fan Motor
4	1	JDPWASM0042_2	Medium Speed Fan Motor
5	1	JDPWASM0042_3	Hi Speed Fan Motor
6	1	JDPWASM0042_4	Fuse Power
7	1	JDPWASM0042_5	Motor Ground

B

A



SCALE 1.000

Tolerances:
 Unless otherwise specified
 X.X = ±1/16"
 Angular = ± 1.0°

CONFIDENTIALITY NOTICE

This material is property of Jodale Perry Corporation (JDP) or one of its subsidiaries or affiliates and is not to be used by the recipient for any purpose other than the purpose for which it was transmitted. The material remains the property of JDP and shall be returned upon request. The material may not be reproduced or disclosed to third parties without the written consent of JDP

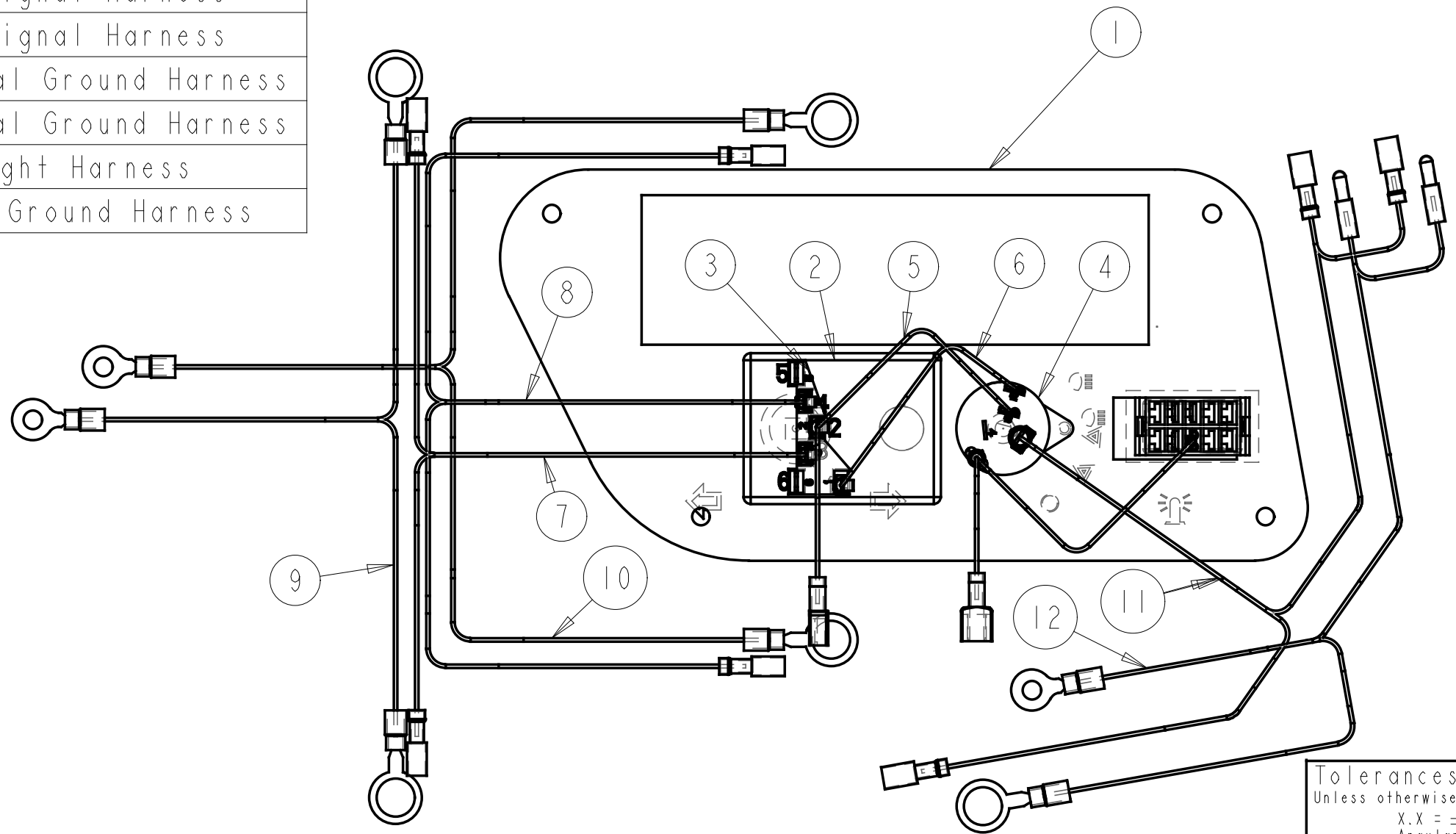
Material	Req'd	JODALE PERRY CORPORATION Box 909, 300 Route 100, Morden MB, Canada			
		Title 3-Speed Fan Power Harness			
Drawn By	Date	Size	Part Number	Project	Rev
Dave Friesen	2006-06-07	A		Boxer Parts	
Checked By	Date	Scale	Units	File Number	
			Imperial	JDPWASM0042	

2

1

Item	Qty	File Number	Description
1	1	JDPASM0106	Switch Plate Assembly
2	1	JDPPRT0179	Hobbs Flasher
3	1	JDPPRT0510	Hobbs Connector
4	1	JDPPRT0410	Road Light Switch
5	1	JDPWASM0043-1	Power Harness
6	1	JDPWASM0043-2	Flasher Power Harness
7	1	JDPWASM0043-3	RH Turn Signal Harness
8	1	JDPWASM0043-4	LH Turn Signal Harness
9	1	JDPWASM0043-5	RH Turn Signal Ground Harness
10	1	JDPWASM0043-6	LH Turn Signal Ground Harness
11	1	JDPWASM0043-7	Road Light Harness
12	1	JDPWASM0043-8	Road Light Ground Harness

Revision	Decision	Date



Tolerances:
 Unless otherwise specified
 X.X = ± 1.0mm
 Angular = ± 1.0°

SCALE 0.500

CONFIDENTIALITY NOTICE

This material is property of Jodale Perry Corporation (JDP) or one of its subsidiaries or affiliates and is not to be used by the recipient for any purpose other than the purpose for which it was transmitted. The material remains the property of JDP and shall be returned upon request. The material may not be reproduced or disclosed to third parties without the written consent of JDP.

Material	Req'd	JODALE PERRY CORPORATION Box 909, 300 Route 100, Morden MB, Canada			
Title		BOXER Roadlight Switch Assembly			
Drawn By Dave Friesen	Date 2006-04-28	Size B	Part Number	Project	Rev
Checked By	Date	Scale	Units Imperial	File Number JDPWASM0043	

Item	Qty	Length	Color	File Number	Description
1	1			JDPPRT0497	14GA Switch Connector
2	1	5"	Red	JDPWASM0044_2	# 3 To C on Fan Switch
3	1	10"	White	JDPWASM0044_3	#4 To 85 on relay
4	1			JDPPRT0481	Relay Connector
5	1	6" 4"	Red	JDPWASM0044_1	# 30 on relay to fuse block
6	1	9"	Black	JDPWASM0044_4	# 86 on relay to ground
7	1	18"	White	JDPWASM0044_5	# 87 to freeze switch
8	1			JDPPRT0519	Freeze Switch
9	1	18"	White	JDPWASM0044_6	Freeze Switch to drier
10	1			JDPPRT0427	Reciever Drier
11	1		White	JDPWASM0044_7	Drier to compressor
12	1			JDPPRT0321	Relay

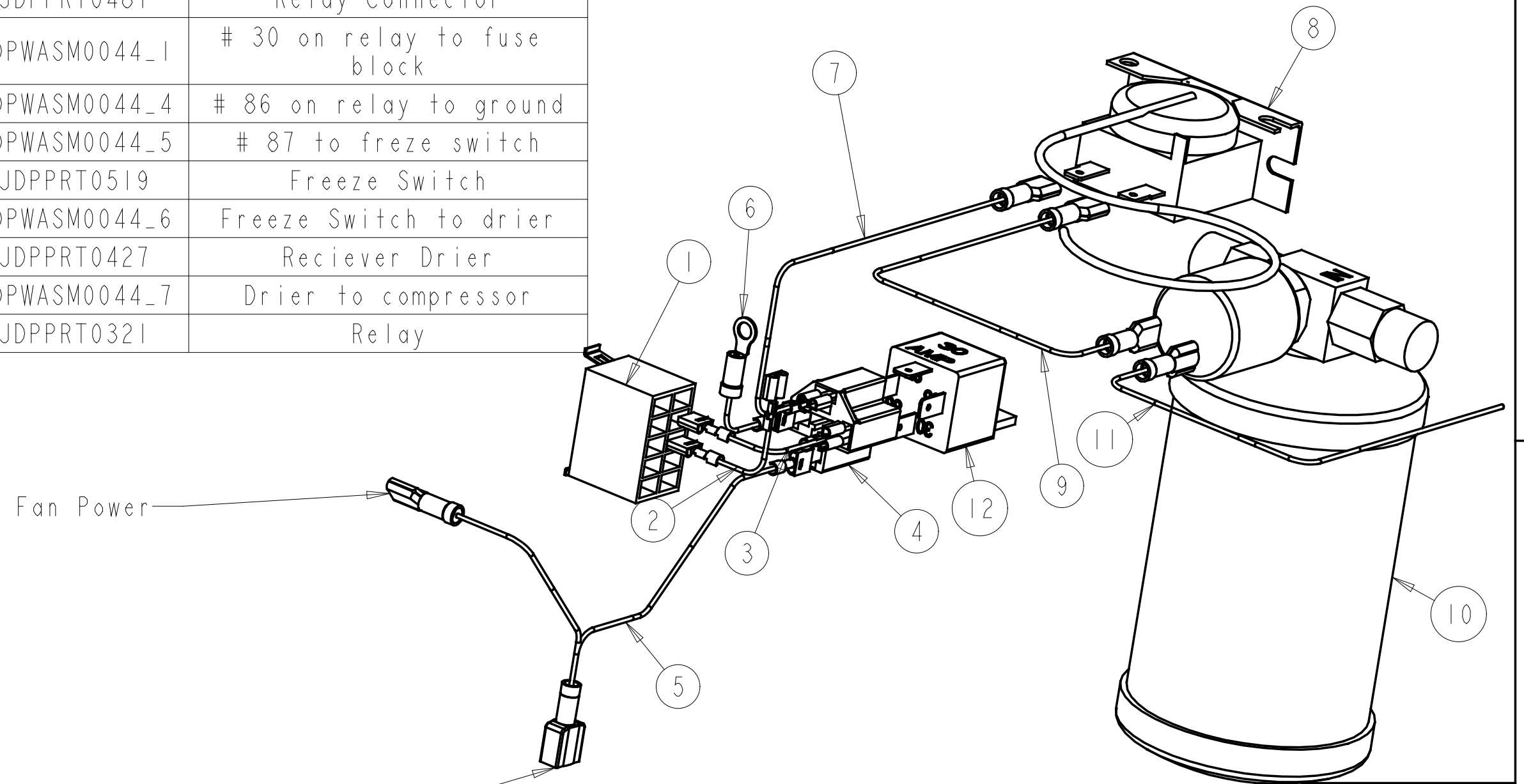
Revision	Decision	Date

B

B

A

A



Fan Power

To Fuse

Tolerances:
 Unless otherwise specified
 X.X = ± 1.0mm
 Angular = ± 1.0°

CONFIDENTIALITY NOTICE

This material is property of Jodale Perry Corporation (JDP) or one of its subsidiaries or affiliates and is not to be used by the recipient for any purpose other than the purpose for which it was transmitted. The material remains the property of JDP and shall be returned upon request. The material may not be reproduced or disclosed to third parties without the written consent of JDP.

SCALE 0.700

2

Material	Req'd	JODALE PERRY CORPORATION Box 909, 300 Route 100, Morden MB, Canada			
Title		A/C Power Harness			
Drawn By Dave Friesen	Date 2006-06-07	Size B	Part Number	Project	Rev
Checked By	Date	Scale	Units Imperial	File Number JDPWASM0044	