

**Kubota**

**F2260, F2560, F3060 Boxer**





**Parts List & Mounting Instructions**

Jodale • Perry

Printed: 2005/04

# Kubota F2260, F2560, F3060 Mounting Instructions

## Standard Parts List

Qty	Description	Photo
1	Front Bracket	
6	Front Bracket Spacers	
1	Rear Bracket	
1	Underseat Shield	
2	Cab Lift Brackets (1" Tube)	
2	3/8" Black Snap Caps	
14 LF	180° O-rubber	
1	Underseat Upholstery	
1	Centre Floormat	
L&R	Side Platform Extension Floormat	
1	Headlight Cover (Plastic)	

NOTE: All references to left and right are taken from the operator's point of view when he/she is sitting in the driver's seat.

# Kubota F2260, F2560, F3060 Mounting Instructions

## Standard Bolts List

<b>Qty</b>	<b>Description</b>
5	Bolt, Hex, 3/8" x 1 1/2", Gr. 5, YD
1	Bolt, Hex, 3/8" x 2", Gr. 5, YD
4	Bolt, Hex, 1/2" x 3", Gr. 8, YD
4	Nut, Hex, 1/2", Gr. 8, YD
6	Nut, Flange, 3/8", Gr. 5, YD
1	Spacer, Tube, Buttite (Spaenaur #607-117)
4	Isolator, Rubber, 9/16" x 3"
4	Washer, Lock, 1/2"
4	Washer, Flat, Rubber, 9/16" x 2 1/2"
4	Washer, Flat, Steel, 9/16" x 2 1/2"
2	Screw, Pan-Head, #8 x 1/2", Macro-black

## Electrical Connectors List

<b>Qty</b>	<b>Description</b>
2	Connectors, Loop, 10GA, 1/4"
1	Connectors, Loop, 10GA, 1/2"
1	Connectors, Loop, 10GA, 3/8"
1	Splicer, Wire, Blue

NOTE: All references to left and right are taken from the operator's point of view when he/she is sitting in the driver's seat.

# Kubota F2260, F2560, F3060 Mounting Instructions

## Optional Parts Lists

### Heater Option (if equipped)

<b>Qty</b>	<b>Description</b>	<b>Photo</b>
1	3/8NPT - 3/8" Barb 180° Fitting	
2	MH-6 Hose Clamps	
2	HS-10 Hose Clamps	
25 LF	3/8" ID Heater Hose	
3"	5/8" ID Heater Hose	
1	5/8" Barb - 3/8" Barb Reducer	

NOTE: All references to left and right are taken from the operator's point of view when he/she is sitting in the driver's seat.

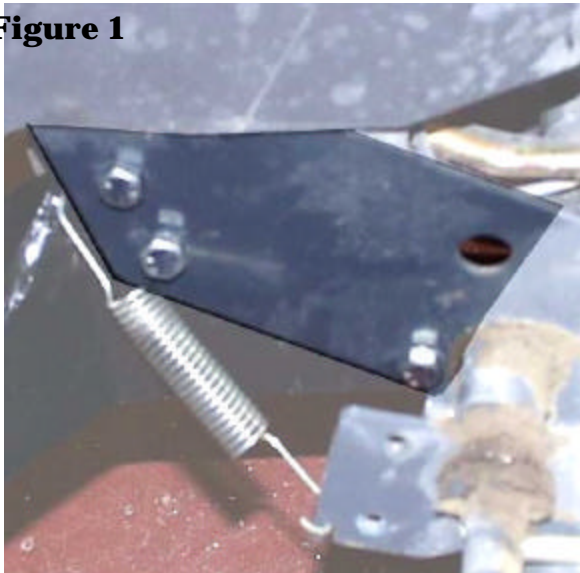
# Kubota F2260, F2560, F3060 Mounting Instructions

NOTE: Use the following torque specifications for all hardware: 1/2" hardware 73 ft-lbs, 3/8" hardware 42 ft-lbs, 5/8" hardware 177 ft-lbs.

1. Remove 2-post ROPS assembly, seat and seat tracks, differential lock pedal, park brake lever, brake pedal, and hydrostatic pedal. Then remove the plastic covers around the fuel fill spout and right side controls from the operator platform. Lower any front attachments the machine may have. This Boxer cab is not compatible with Kubota baggers.

2. Locate the two hole bolt pattern directly underneath the steering tower, near the front of the left chassis member. Use drawing KUF3060PRT0003 provided at the rear of the instructions to locate and drill one 3/8" hole as shown. Refer to Figure 1 as well. Repeat for the right chassis member.

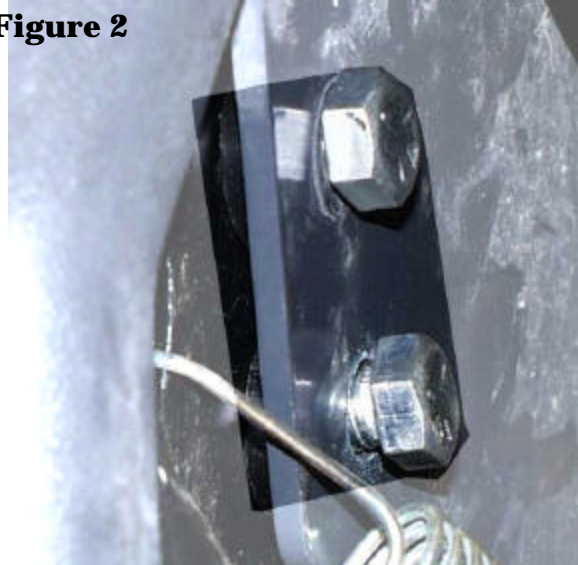
**Figure 1**



3. Take the front bracket and position it between the left and right chassis members, in-line with the three-hole bolt patterns drilled out previously. Loosely bolt the bracket, through the front bracket spacers to the members using

the 3/8" x 1 1/2" hex bolts, and flange nuts provided. NOTE: Do not bolt through the front hole of the right chassis member (see Figure 2).

**Figure 2**



4. Re-install the operator platform, differential lock pedal, brake pedal, and hydrostatic pedal. Re-attach the parking brake lever through the front hole of the right chassis member and front bracket spacer, to the front bracket using a 3/8" x 2" hex bolt, flange nut, and buttite tube spacer provided. (See Figure 3)

**Figure 3**



NOTE: All references to left and right are taken from the operator's point of view when he/she is sitting in the driver's seat.

# Kubota F2260, F2560, F3060 Mounting Instructions

5. Take the 180° clip-on O-rubber and slide it onto the rear, and side edges of the under-seat shield, where it contacts the operator platform. Position the shield on top of the platform, in-line with the ROPS assembly bolt pattern. Ensure that the shield will not contact the seat tracks, while permitting adequate clearance for the lift link lowering speed control knob and transmission oil filter. Adjust as required. (See Figure 4)

**Figure 4**



6. Take the underseat upholstery and position it against the top of the operator platform. Centre the upholstery length across the width of the unit. Line up the front edge of the upholstery with the back edge of the opening panel in the operator platform. Cut all openings for controls, seat bolts, and wiring. Glue the centre of the upholstery to the depressed centre of the operator platform.

**CAUTION:** Do not glue the upholstery to the platform sides until the cab has been installed. (See Figure 4)

7. Take the rear bracket and factory ROPS hex bolts. Insert one through each hole in the rear bracket. Position the bracket against the top of the under-seat

**Figure 5**



**Figure 6**



shield, in-line with the ROPS assembly bolt pattern, with the cab mounting plates to the rear. Loosely bolt the bracket, through the shield to the platform. (See Figure 4)

8. Re-attach the seat and seat tracks.

9. Move to the cab. Remove the left door, right escape window, and lower right window prior to continuing. Take the supplied cab lift brackets and attach

**NOTE:** All references to left and right are taken from the operator's point of view when he/she is sitting in the driver's seat.

# Kubota F2260, F2560, F3060 Mounting Instructions

to the cab frame through the hole in the Upper A-C crossmember right beside the b-post on each side of the cab. Then, using a chain, or lifting strap, hoist the cab off of the shipping pallet. Un-bolt the front and rear shipping brackets and begin to install cab weatherstripping. Take the 180° clip-on O-rubber and starting at the right rear corner of the cab, slide the O-rubber onto the steel panel of the cab. Use Figures 5, 6, and 7 as a guide for installation. It is possible to use one single piece of O-rubber around the cab structure until you reach the left rear mount. The two notches at the left front of the cab are for the turning brake option if machine is so equipped. If the turning brake option is installed, you will have to remove a short section of O-rubber from that area and re-install it when dropping the cab onto the cab brackets.

10. Now you are ready to mount the cab.

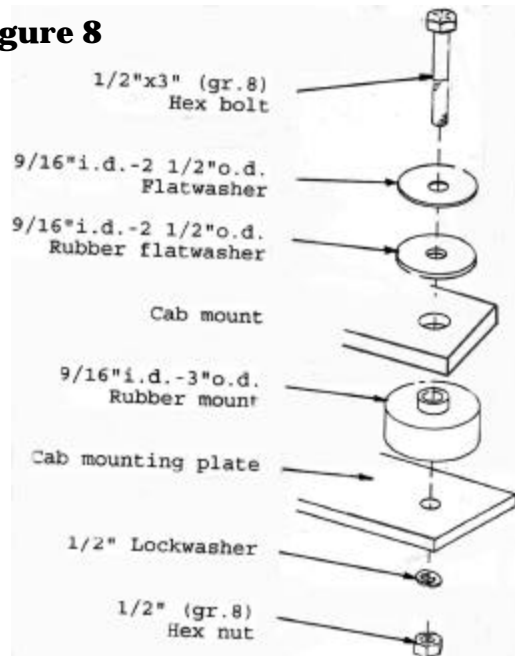
**Figure 7**



Place on rubber isolator over each mounting pad of the front and rear cab brackets. Remove the seat belt bracket from the left side of the seat prior to continuing. Lift the cab over the tractor.

Slowly lower the cab onto the tractor. The left side of the cab frame must fit inside of the fuel fill area, so the cab will have to be shipped over to the left until the fuel cap is cleared. Once the cab is sitting on the isolators, ensure the protrusion of the isolator is inside of the cab mount, and then using the 1/2" x 3" hex bolts, rubber flat washers, steel flat washers, lock nuts, and hex nuts provided. (See Figure 8)

**Figure 8**



11. Once all mounting bolts have been started, ensure that the cab is centred on the machine, and then torque all mounting bolts to the torque specifications provided earlier.

12. Trim the underseat upholstery to fit snugly inside the side platform extensions and rear panel. Glue the upholstery to the operator to the operator platform sides. Ensure that the upholstery does not interfere with the normal operation of any controls. Re-attach the plastic covers removed in Step 1.

NOTE: All references to left and right are taken from the operator's point of view when he/she is sitting in the driver's seat.

# Kubota F2260, F2560, F3060 Mounting Instructions

13. Take the left seat belt bracket removed prior to cab installation and re-bolt onto seat.

14. Proceed with connecting cab power. Take the heavy red wire and connect to 12V on tractor. Take the heavy black wire and connect to the main tractor ground. Take the orange wire and connect to a switched source on the tractor.

15. Take the centre floormat piece and position on top of the centre of the operator platform around the steering tower. Cut the floormat to fit snugly around all controls, pedals, and levers and then glue into place. (See Figure 9)

**Figure 9**



16. Take the left platform extension floormat and position it against the top of the left operator foot platform. Cut the floormat to fit snugly around all pedals and glue into place. (See Figure 9) Repeat for the right platform extension floormat.

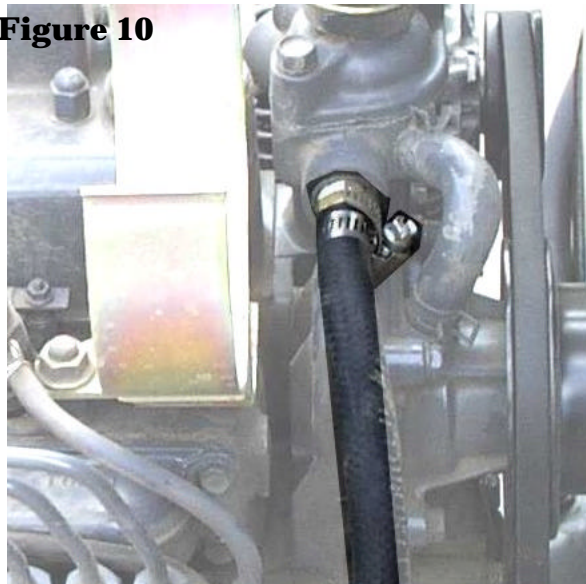
17. To ensure maximum protection against sound and moisture penetration, use a black urethane sealant to fill all

cracks and small openings around the floormat and a silicone sealant around the various shields.

Proceed with steps 18-20 only if cab is equipped with heater option.

18. Drain the engine antifreeze before proceeding. Locate the pressure port on the right side of the thermostat housing. Remove the plug. Take the 3/8NPT - 3/8" Barb 180° fitting, and screw it into the port (pressure fitting). REMEMBER to use a water sealant material around the threads of the fitting. See Figure 10.

**Figure 10**



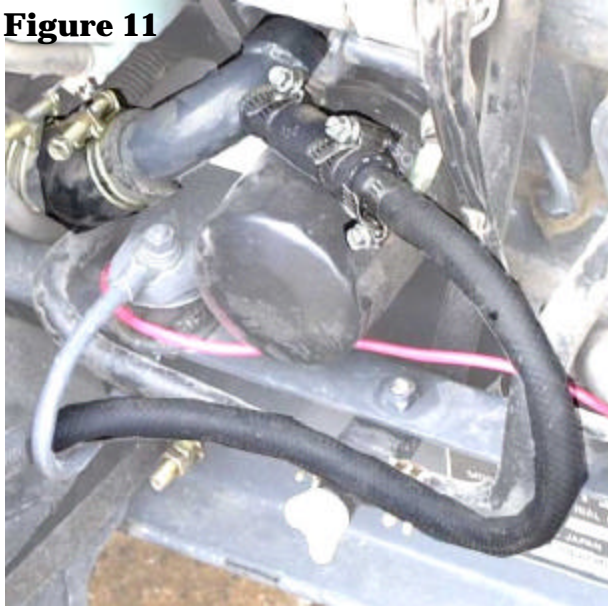
Locate the radiator hose and pipe on the left side of the engine at the base of the radiator. Remove the plug on the pipe, then take the 5/8" ID heater hose and slide it onto the steel fitting that is welded to the pipe. Insert the 5/8"-3/8" reducer at the other end of the hose, and fasten both ends with the HS-10 hose clamps provided (suction fitting). REMEMBER to use a water sealant material around the threads of the fitting. See Figure 11.

NOTE: All references to left and right are taken from the operator's point of view when he/she is sitting in the driver's seat.



# Kubota F2260, F2560, F3060 Mounting Instructions

**Figure 11**



19. Locate the end of the 3/8" ID heater hose labelled pressure and route to the pressure fitting. Ensure that the hose does not interfere with any controls, levers, moving parts. Tie down the hose as required and connect the hose to the fitting. Use one of the HS-6 hose clamps provided. Take the other 3/8" ID heater hose and route it towards the suction fitting. Ensure that the hose does not interfere with any controls, levers, moving parts. Tie down the hose as required and connect the hose to the suction fitting with the other HS-6 hose clamp.

20. Ensure that all connections are tight, and re-fill engine antifreeze. Open the water valve using the rotary control cable in the left switchplate of the cab, and turn on the fan. Start the unit and run at PTO RPM for five minutes while the engine coolant builds up heat. Check the engine for leaks and add antifreeze as required. Continue running the engine until the heater produces HOT AIR. HINT: open the radiator cap while

the engine is running to help purge air from the coolant system.

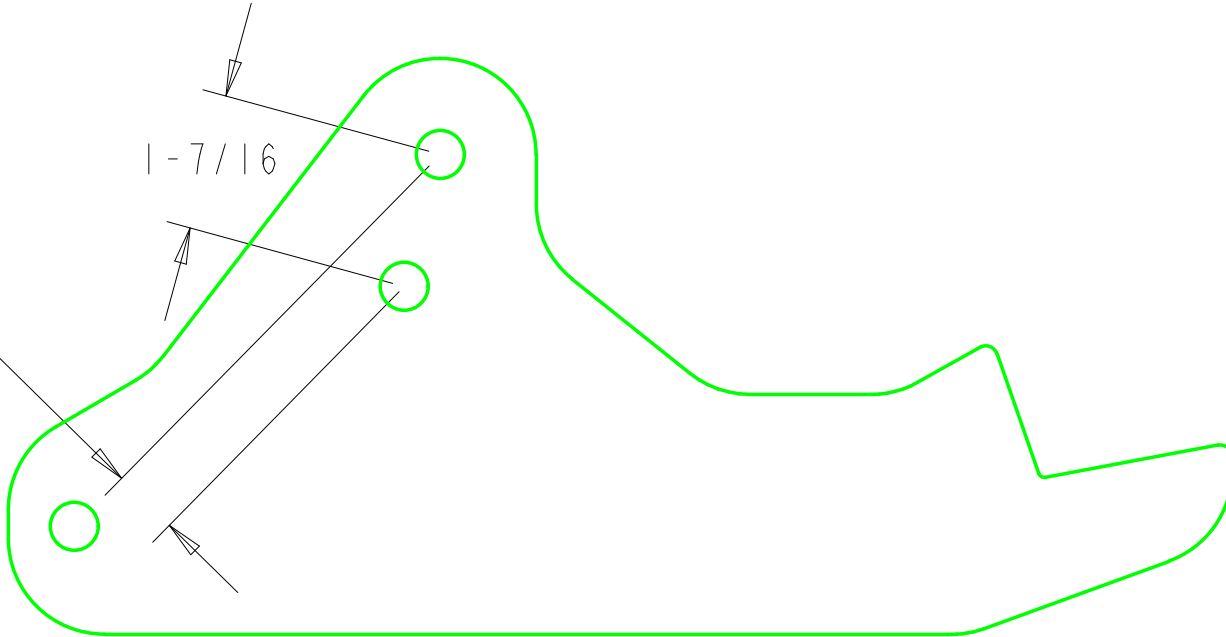
21. Take the plastic light cover and the 180° clip-on O-rubber. Slide the O-rubber on the top side as shown in Figure 9. Screw into place with the fasteners provided.

NOTE: All references to left and right are taken from the operator's point of view when he/she is sitting in the driver's seat.

Revision	Decision	Date

B

A



Tolerances:  
 Unless otherwise specified  
 X.X =  $\pm 1/16$ "  
 Angular =  $\pm 1.0^\circ$

SCALE 0.500  
 CONFIDENTIALITY NOTICE

This material is property of Jodale Perry Corporation (JDP) or one of its subsidiaries or affiliates and is not to be used by the recipient for any purpose other than the purpose for which it was transmitted. The material remains the property of JDP and shall be returned upon request. The material may not be reproduced or disclosed to third parties without the written consent of JDP

Material		Req'd		<b>JODALE PERRY CORPORATION</b> Box 909, 300 Route 100, Morden MB, Canada			
				Title Dimension References For Drilling			
Drawn By Dave Friesen	Date 2001-06-05	Size A	Part Number	Project Kubota F 3060	Rev		
Checked By	Date	Scale	Units Imperial	File Number KUF3060PRT0003			